

SCTE | **STANDARDS**

Interface Practices Subcommittee

SCTE STANDARD

SCTE 59 2018 (R2024)

**Test Method for Drop Cable Center Conductor Bond to
Dielectric**

NOTICE

The Society of Cable Telecommunications Engineers (SCTE) Standards and Operational Practices (hereafter called “documents”) are intended to serve the public interest by providing specifications, test methods and procedures that promote uniformity of product, interoperability, interchangeability, best practices, and the long term reliability of broadband communications facilities. These documents shall not in any way preclude any member or non-member of SCTE from manufacturing or selling products not conforming to such documents, nor shall the existence of such standards preclude their voluntary use by those other than SCTE members.

SCTE assumes no obligations or liability whatsoever to any party who may adopt the documents. Such adopting party assumes all risks associated with adoption of these documents and accepts full responsibility for any damage and/or claims arising from the adoption of such documents.

NOTE: The user’s attention is called to the possibility that compliance with this document may require the use of an invention covered by patent rights. By publication of this document, no position is taken with respect to the validity of any such claim(s) or of any patent rights in connection therewith. If a patent holder has filed a statement of willingness to grant a license under these rights on reasonable and nondiscriminatory terms and conditions to applicants desiring to obtain such a license, then details may be obtained from the standards developer. SCTE shall not be responsible for identifying patents for which a license may be required or for conducting inquiries into the legal validity or scope of those patents that are brought to its attention.

Patent holders who believe that they hold patents which are essential to the implementation of this document have been requested to provide information about those patents and any related licensing terms and conditions. Any such declarations made before or after publication of this document are available on the SCTE web site at <https://scte.org>.

All Rights Reserved
© 2024 Society of Cable Telecommunications Engineers, Inc.
140 Philips Road
Exton, PA 19341

Document Tags

<input type="checkbox"/> Specification	<input type="checkbox"/> Checklist	<input type="checkbox"/> Facility
<input checked="" type="checkbox"/> Test or Measurement	<input type="checkbox"/> Metric	<input checked="" type="checkbox"/> Access Network
<input type="checkbox"/> Architecture or Framework	<input type="checkbox"/> Cloud	<input type="checkbox"/> Customer Premises
<input type="checkbox"/> Procedure, Process or Method		

Document Release History

Release	Date
SCTE 59 2002	2002
SCTE 59 2007	2007
SCTE 59 2012	2012
SCTE 59 2018	2018
SCTE 59 2018 (R2024)	4/1/2024

Note: Standards that are released multiple times in the same year use: a, b, c, etc. to indicate normative balloted updates and/or r1, r2, r3, etc. to indicate editorial changes to a released document after the year.

Note: This document is a reaffirmation of SCTE 59 2018. No substantive changes have been made to this document. Information components may have been updated such as the title page, NOTICE text, headers, and footers.

Table of Contents

Title	Page Number
NOTICE.....	2
Document Tags.....	3
Document Release History	3
Table of Contents	4
1. Scope	5
2. Equipment	5
3. Diagrams	5
4. Test Samples	7
5. Procedure.....	7
6. Record.....	8

List of Figures

Title	Page Number
Figure 1	5
Figure 2	6
Figure 3	7

1. Scope

Note: This document is a reaffirmation of SCTE 59 2018. No substantive changes have been made to this document. Information components may have been updated such as the title page, NOTICE text, headers, and footers.

This test is to determine the amount of bond between the center conductor wire to the dielectric (by measuring the force in pounds required to break the bond) for specified flexible RF coaxial drop cables at room temperature.

2. Equipment

- 2.1. Safety razor blade, utility knife or equivalent.
- 2.2. Calibrated 12 inch (30.48 cm) ruler or machinist's scale.
- 2.3. Tensile Test Apparatus capable of indicating peak load attained on a calibrated 100 pounds force (45.45 kg force) full scale range with a rate of travel 2 inches per minute.
- 2.4. Test fixture for attachment to the load cell part of the tensile tester. Test dies should have the hole diameters for center conductor insertion that are given in Section 3.0 (Figure 2).

3. Diagrams

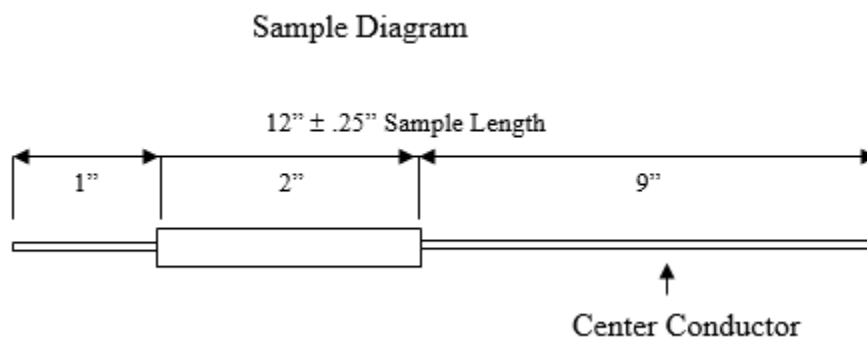


Figure 1

Fixture Diagram

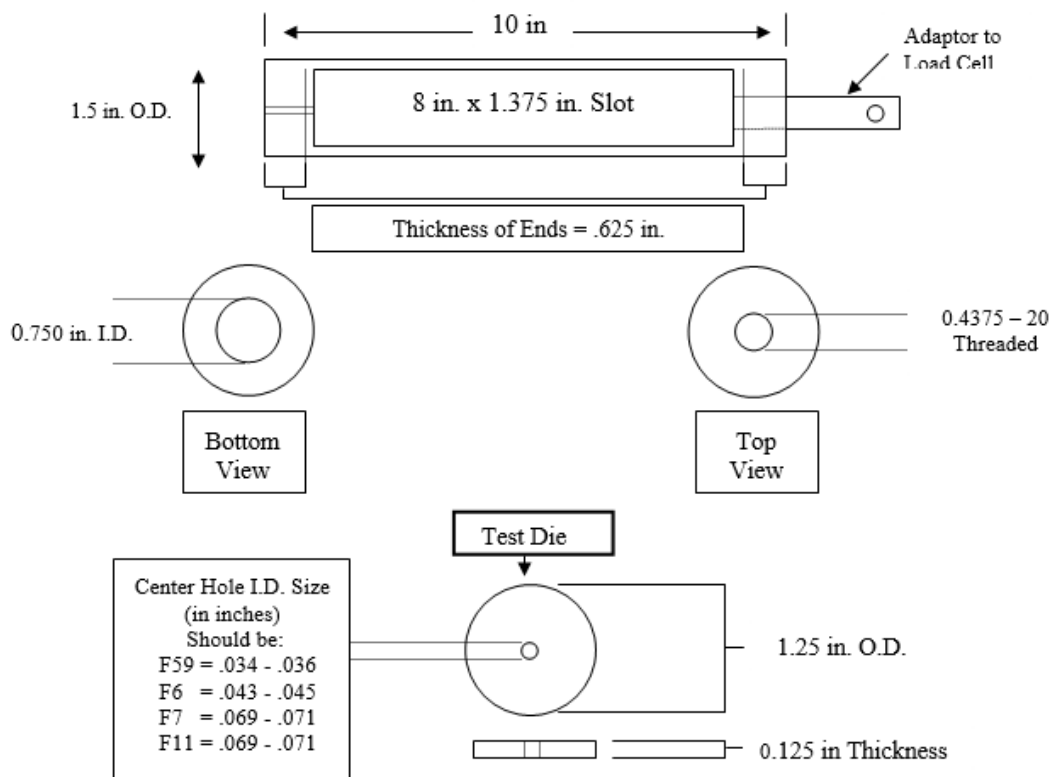


Figure 2

Tensile Test Apparatus Diagram

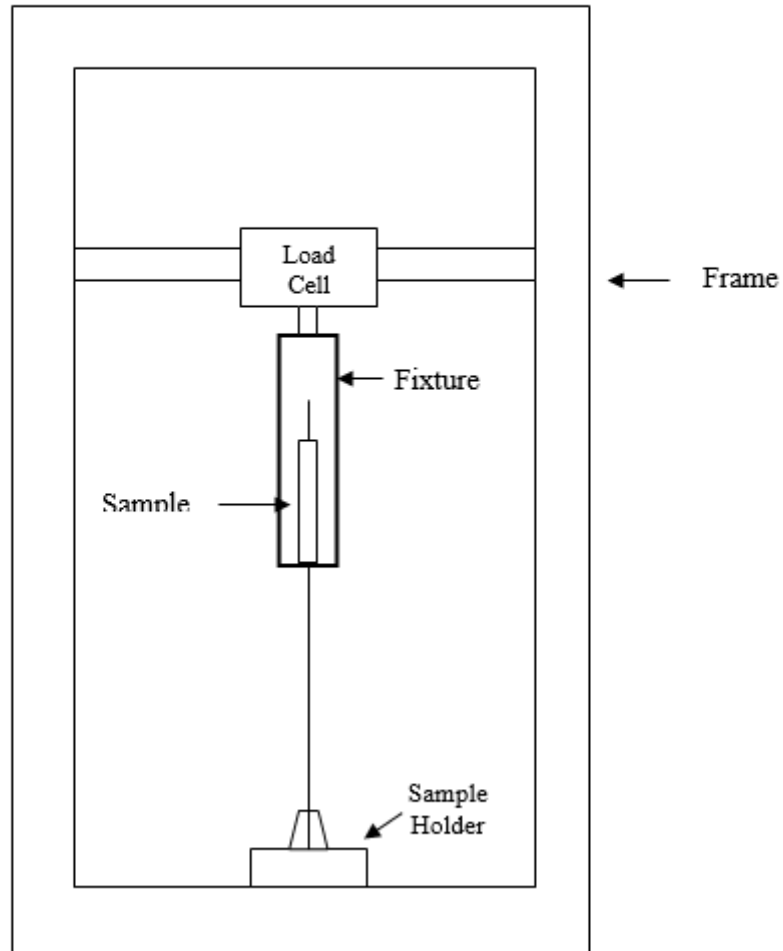


Figure 3

4. Test Samples

- 4.1 Test samples of cables 12 inches with a tolerance of $\pm .25$ inches ($30.5 \text{ cm} \pm .635 \text{ cm}$) are required.

5. Procedure

- 5.1. From a test sample, carefully remove outer jacket and braid from the core. Bonded foil may be left on test specimen. Carefully remove dielectric from each end of the sample as shown in Section 3.0 (Figure 1).

NOTE: It is important not to disturb the remaining 2 inches (5.08 cm) of foam dielectric or score the center conductor during this preparation.

- 5.2. With the test fixture (See Section 3.0 Figure 2) attached to the load cell of the tensile test apparatus, insert the 9 inch (22.86 cm) stripped end of center conductor through the appropriate hole in the test die. Secure the end of the sample into the sample holder of the tensile test apparatus as in Section 3.0 (Figure 3).
- 5.3. With the peak load indicator set to zero, start the tensile test apparatus traveling member at a rate of 2 inches (5.08 cm per minute). Allow it to continue motion until breaking the center conductor adhesion (as evidenced by conductor slippage of the dielectric and no further increase in peak load indication).
- 5.4. Record Peak Value as center conductor adhesion. Samples shall meet the minimum specification for center conductor bond to dielectric.

6. Record

- 6.1 Date, Manufacturer, Cable Type, test temperature in degrees Fahrenheit or degrees Celsius and Center Conductor Adhesion as force.