

SCTE CABLE-TEC
EXPO'13
OCTOBER 21-24 / ATLANTA, GA

UNDERSTANDING BIG DATA THROUGH VISUALIZATION AND GEOSPATIAL ANALYSIS

Randy Frantz

Director Telecommunications Solutions

Esri

Tweet about today's session on Twitter  [#scteExpo](#)

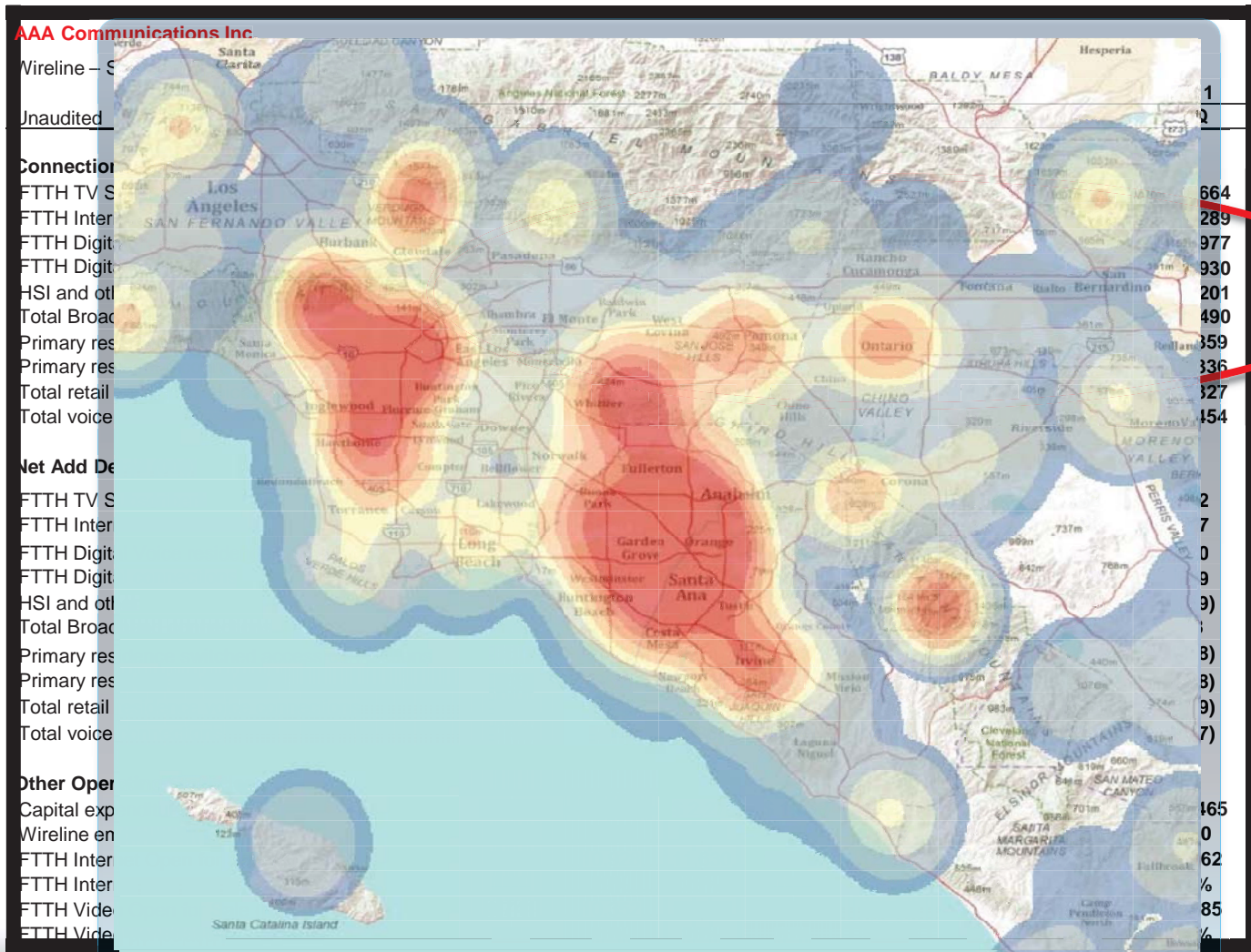
expo.scte.org

Understanding Big Data

Volume, Variety and Velocity



Visualizing Data



GIS Capabilities



**Mapping and
Visualization**



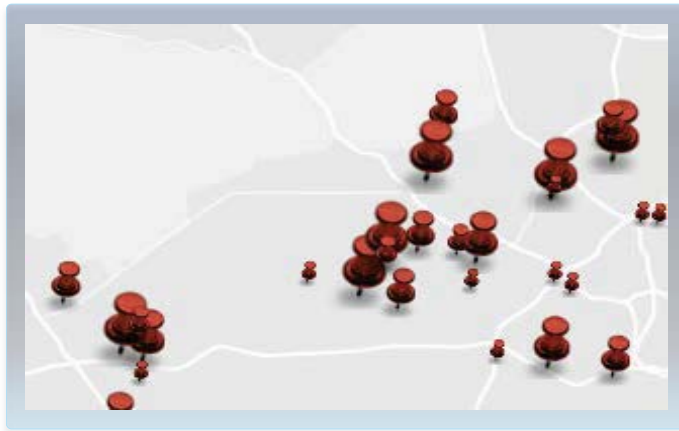
**Spatial
Analytics**



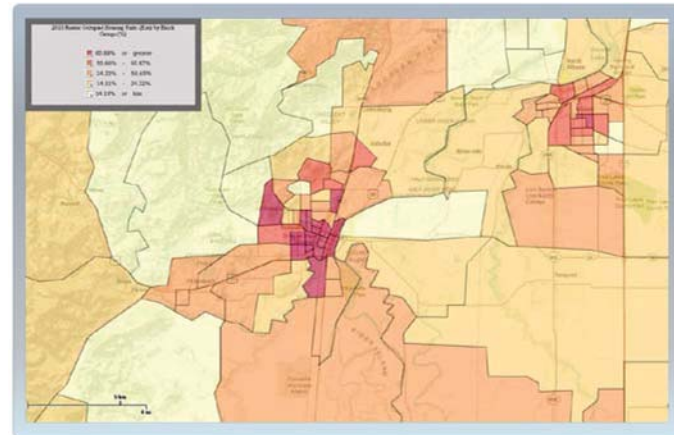
**Information /
Data Enrichment**



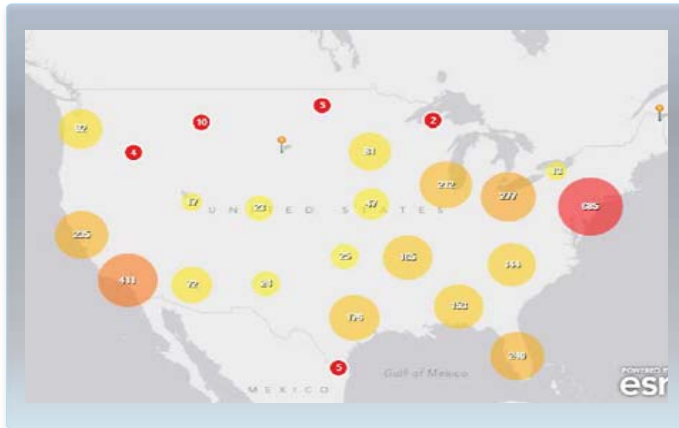
Spatial Analytics



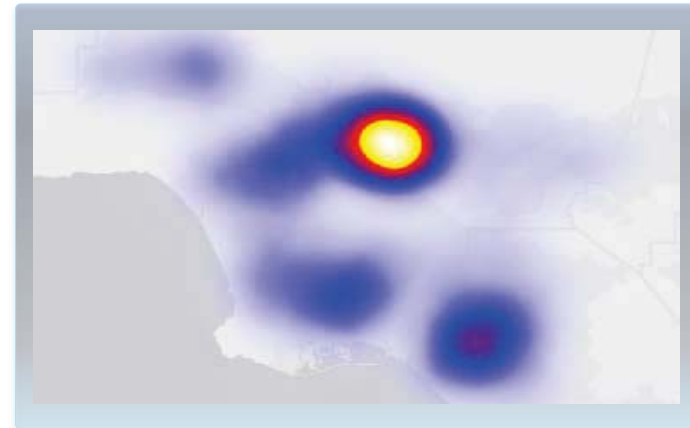
Point & Polygon



Thematic Maps



Clustered Maps



Heat Maps



Spatial Integration

Incidents

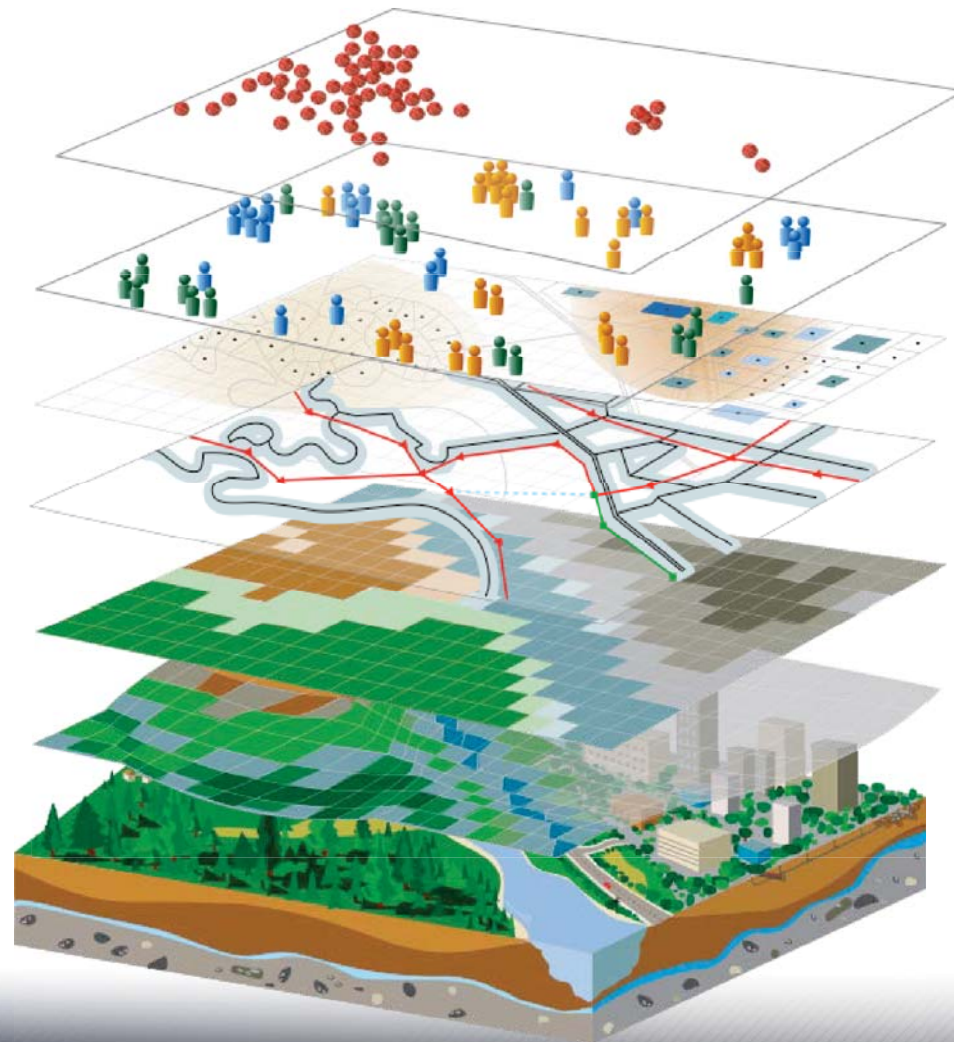
Customers

Service Areas

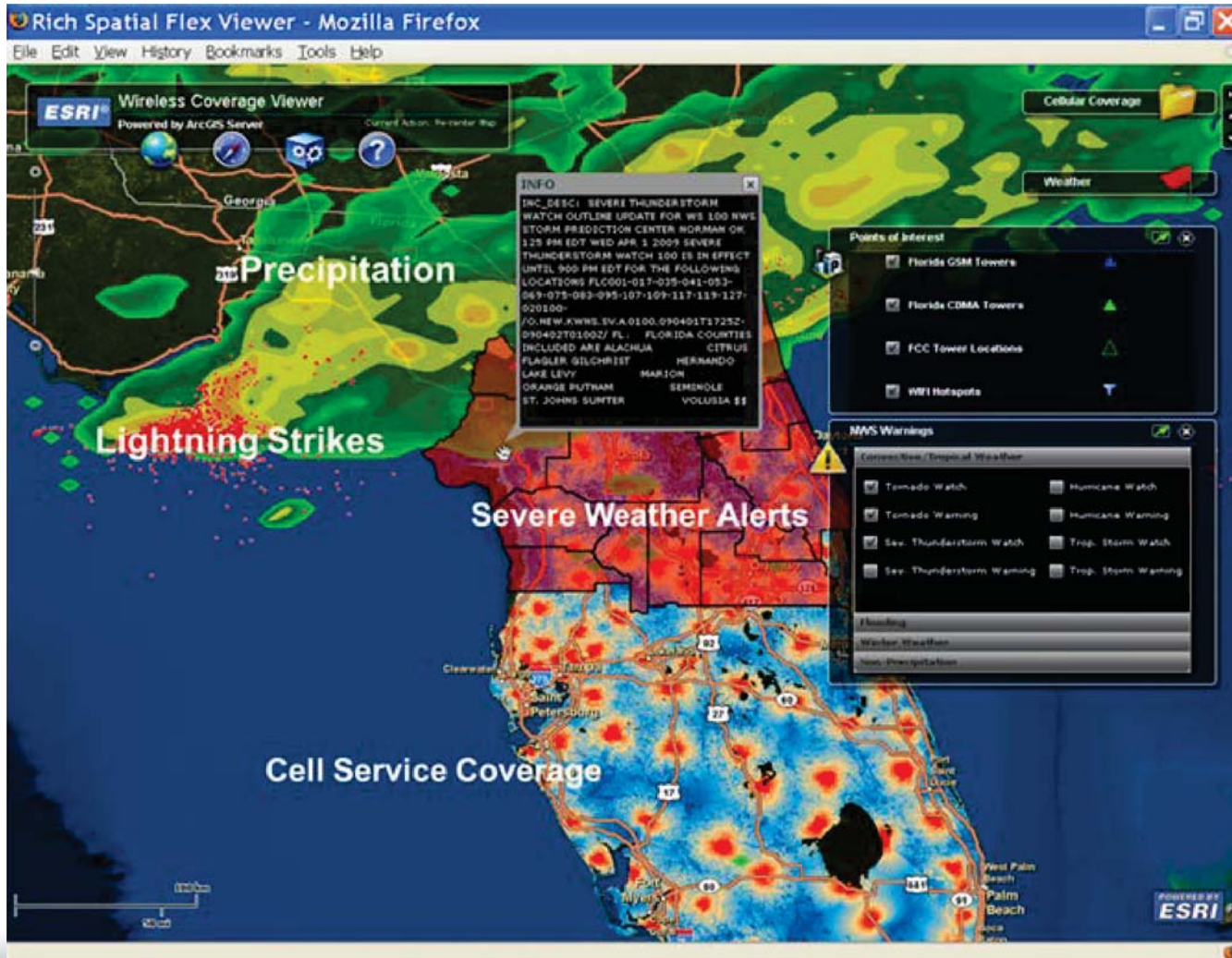
Infrastructure

Features

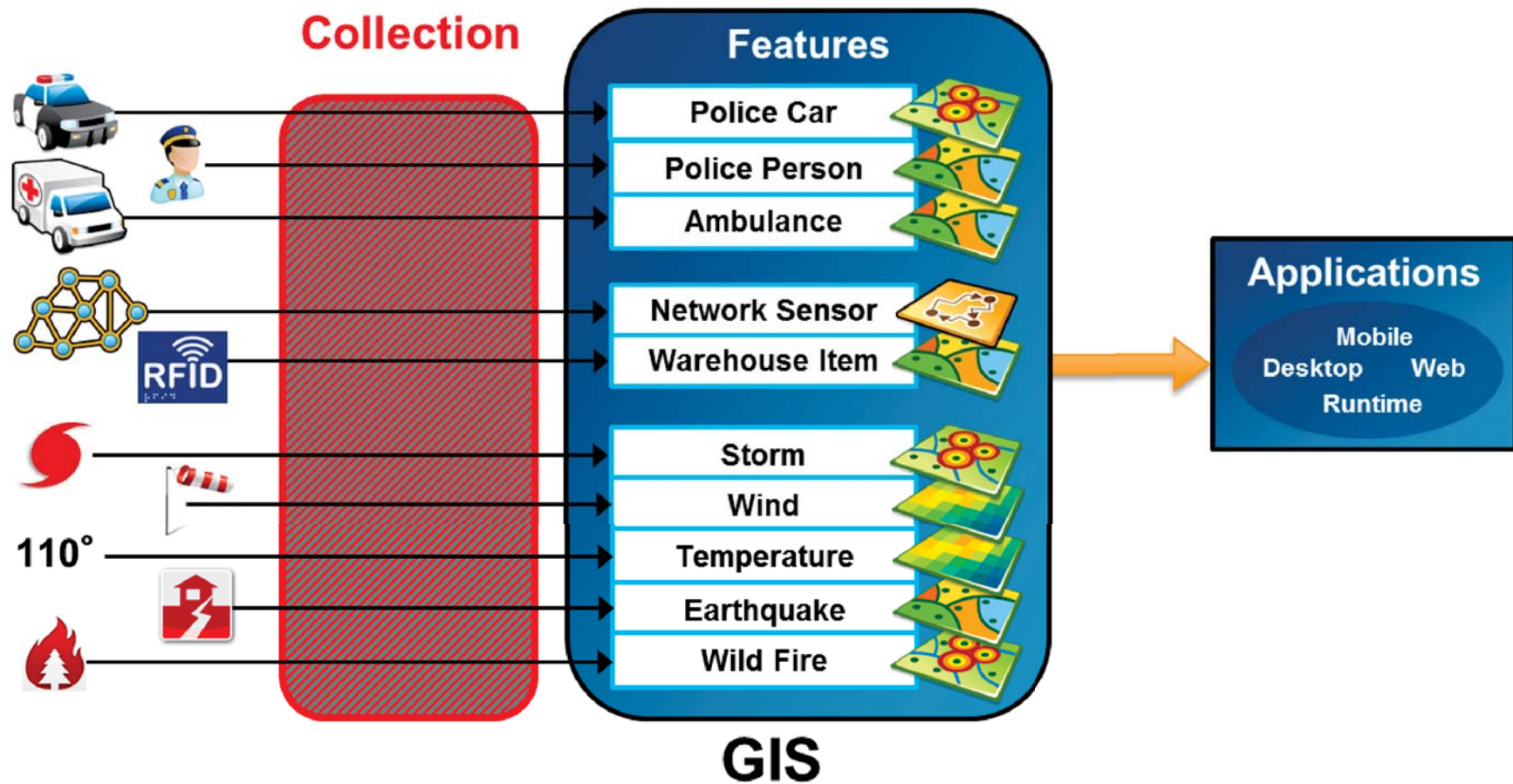
Imagery



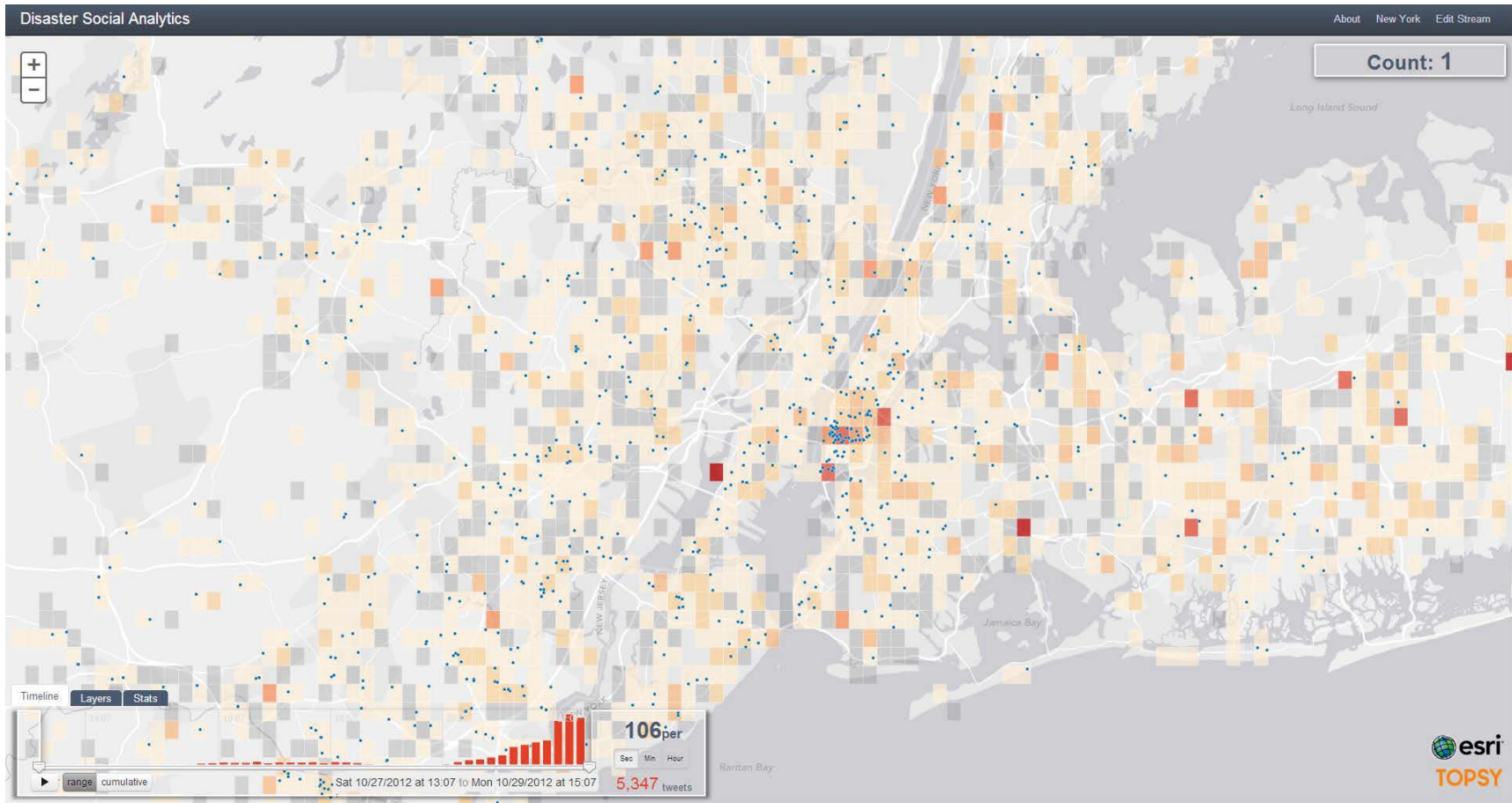
Spatial Integration



Real-Time Data Processing

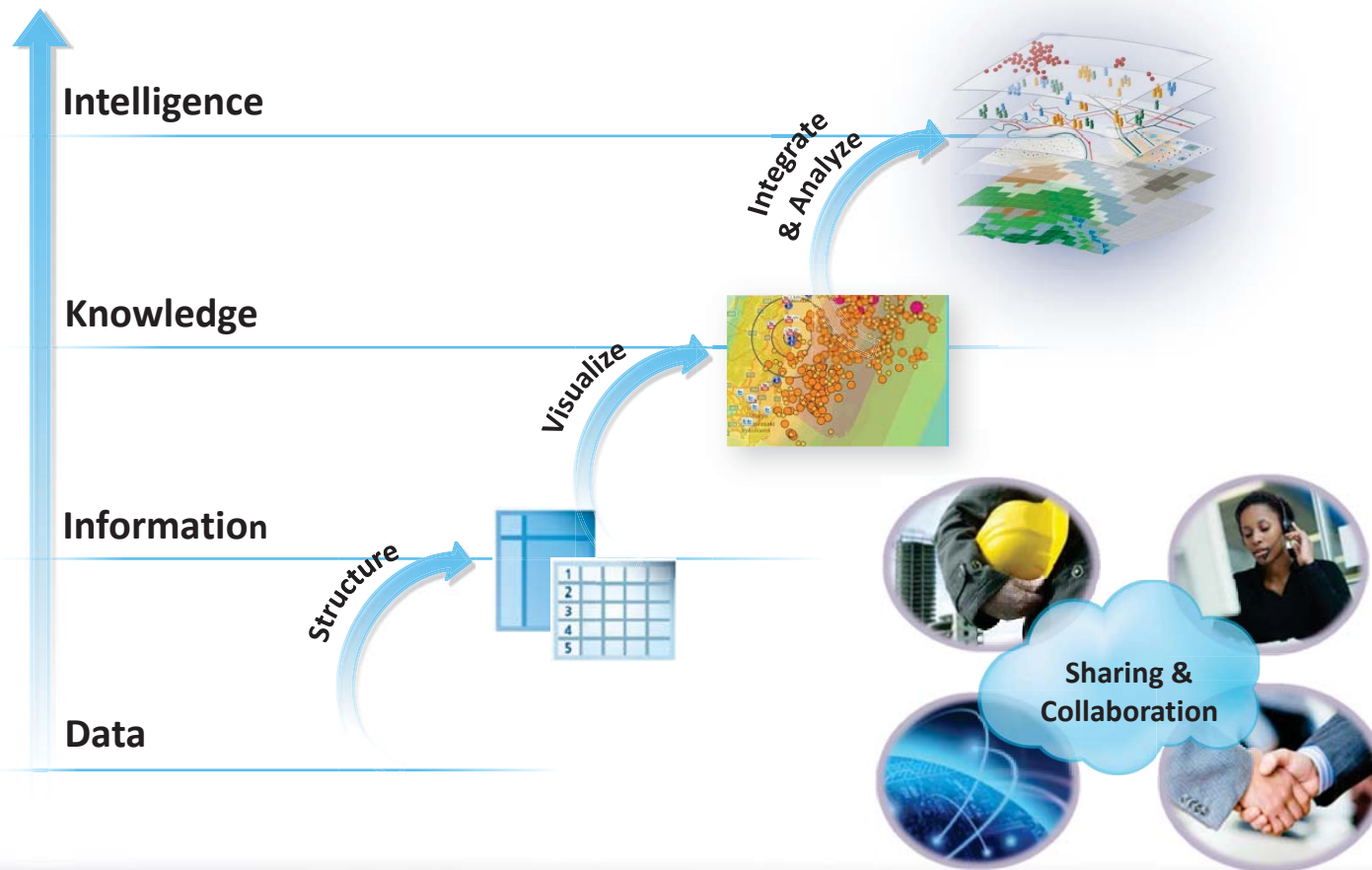


Social Media

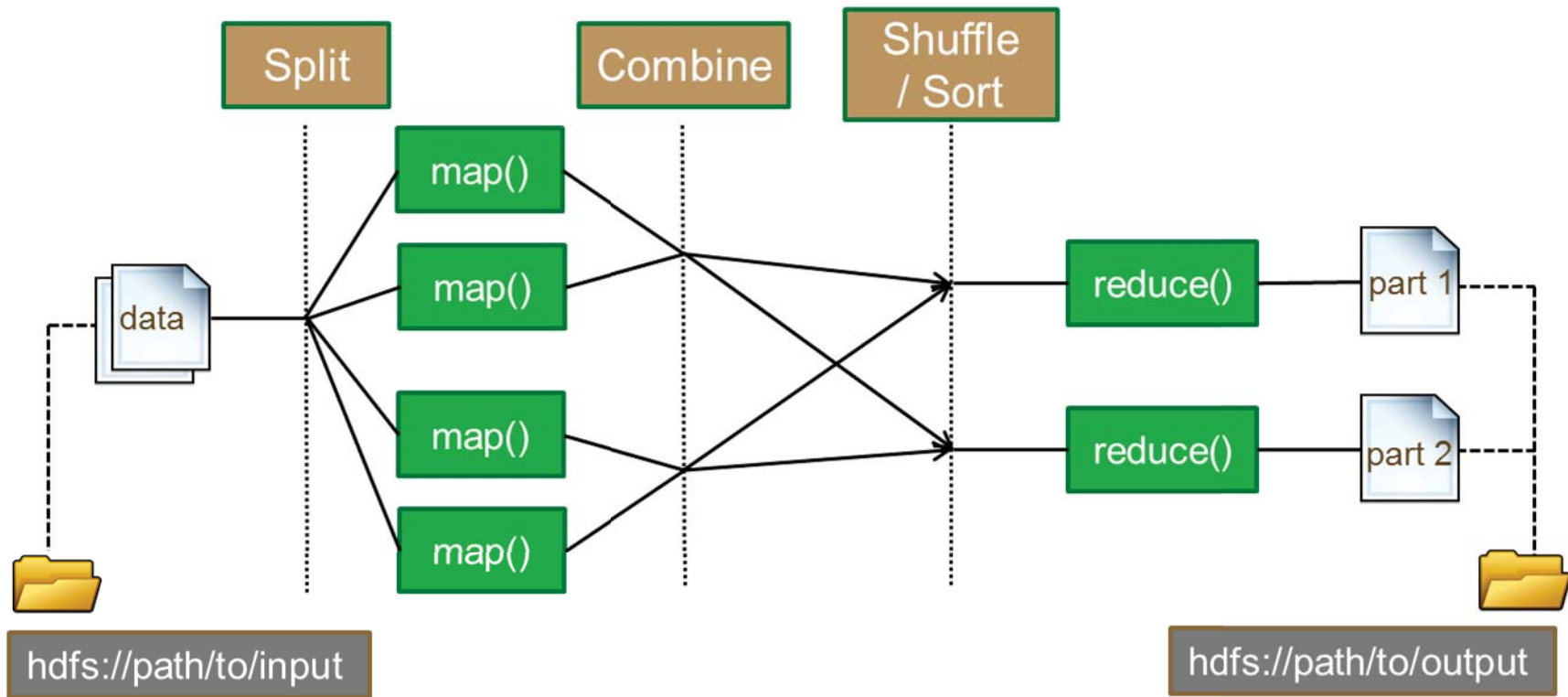


Geospatial Systems

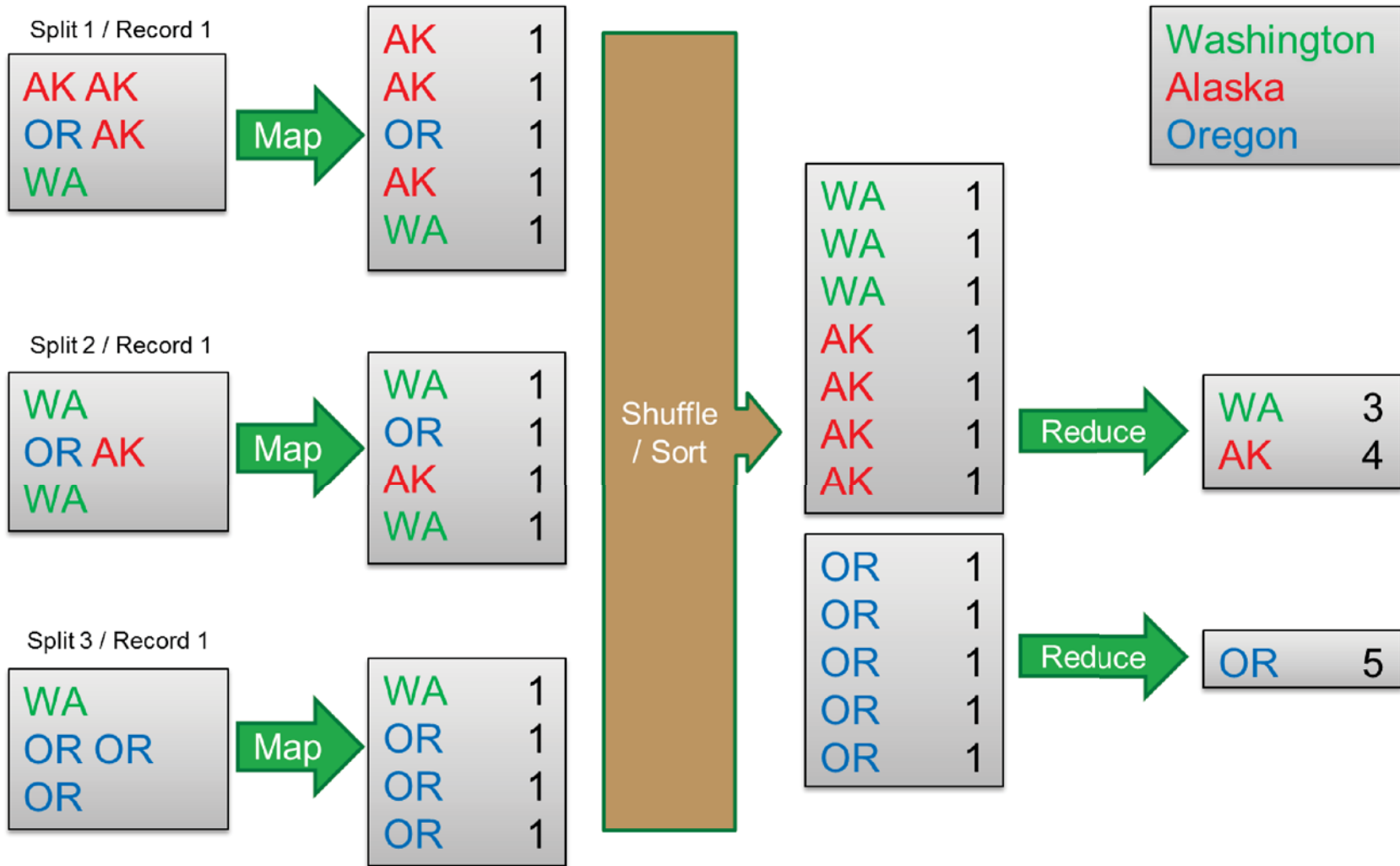
Improved Decision Process



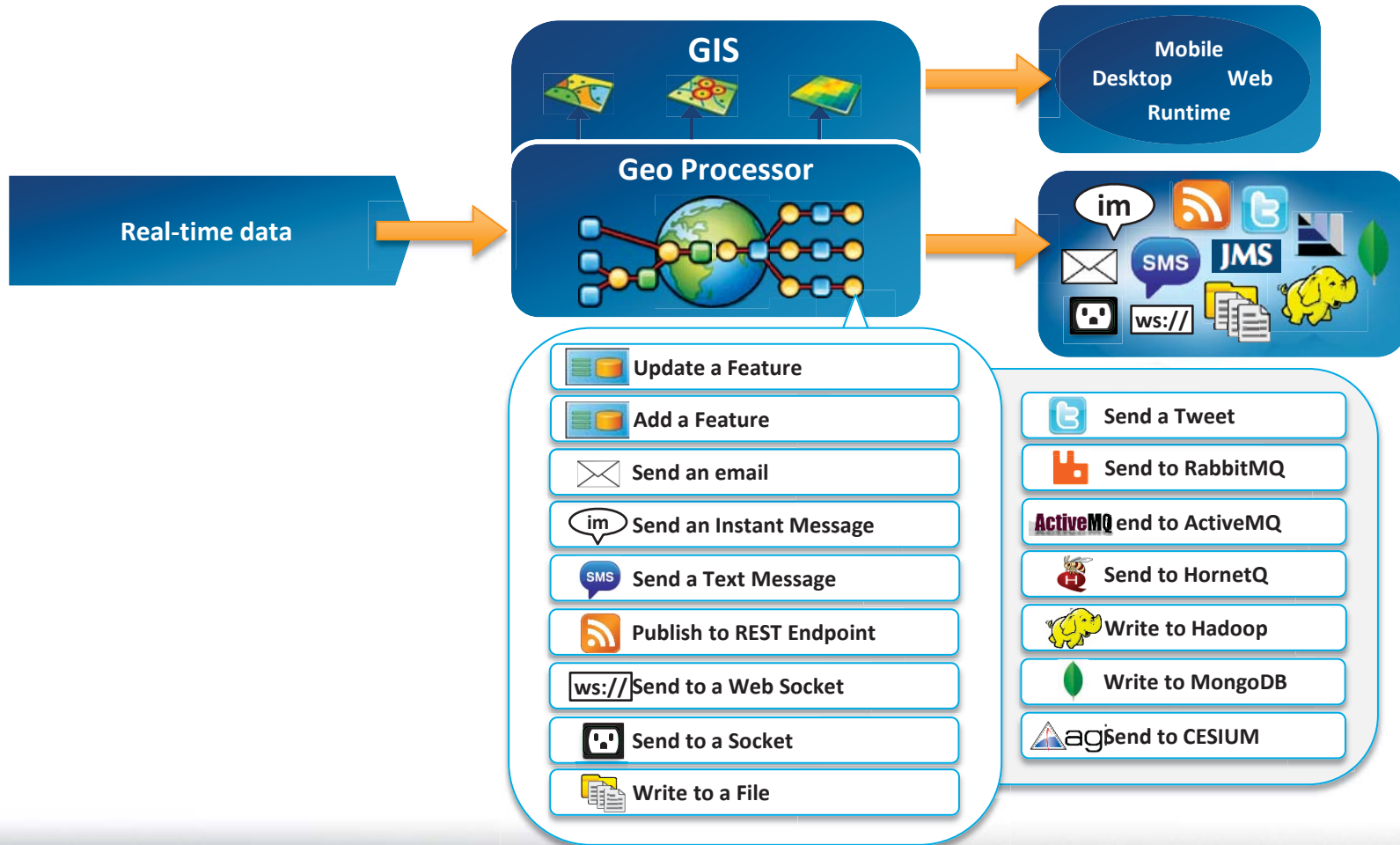
MapReduce Process



MapReduce – Polygon Count

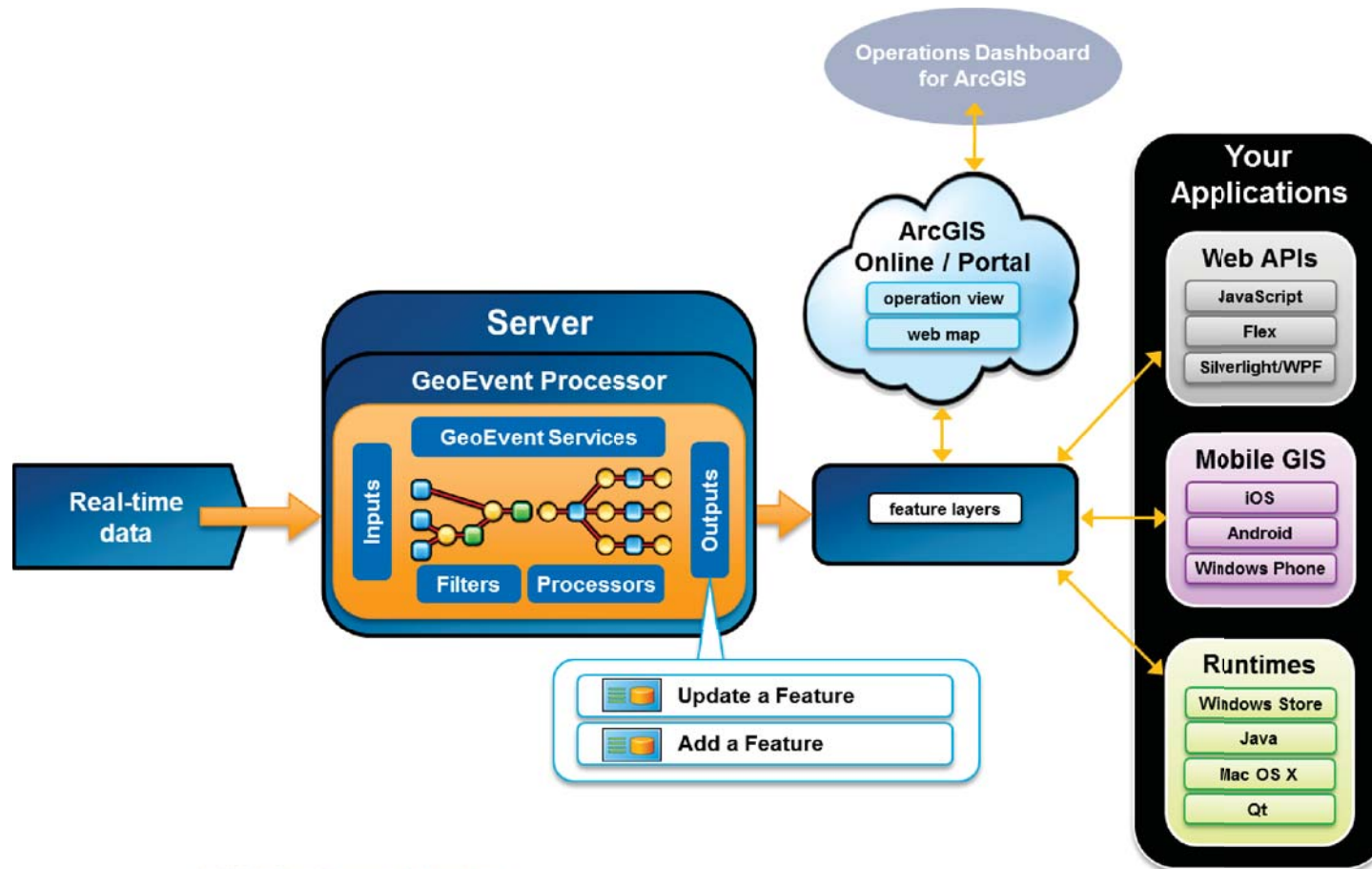


Real-Time GIS Processing



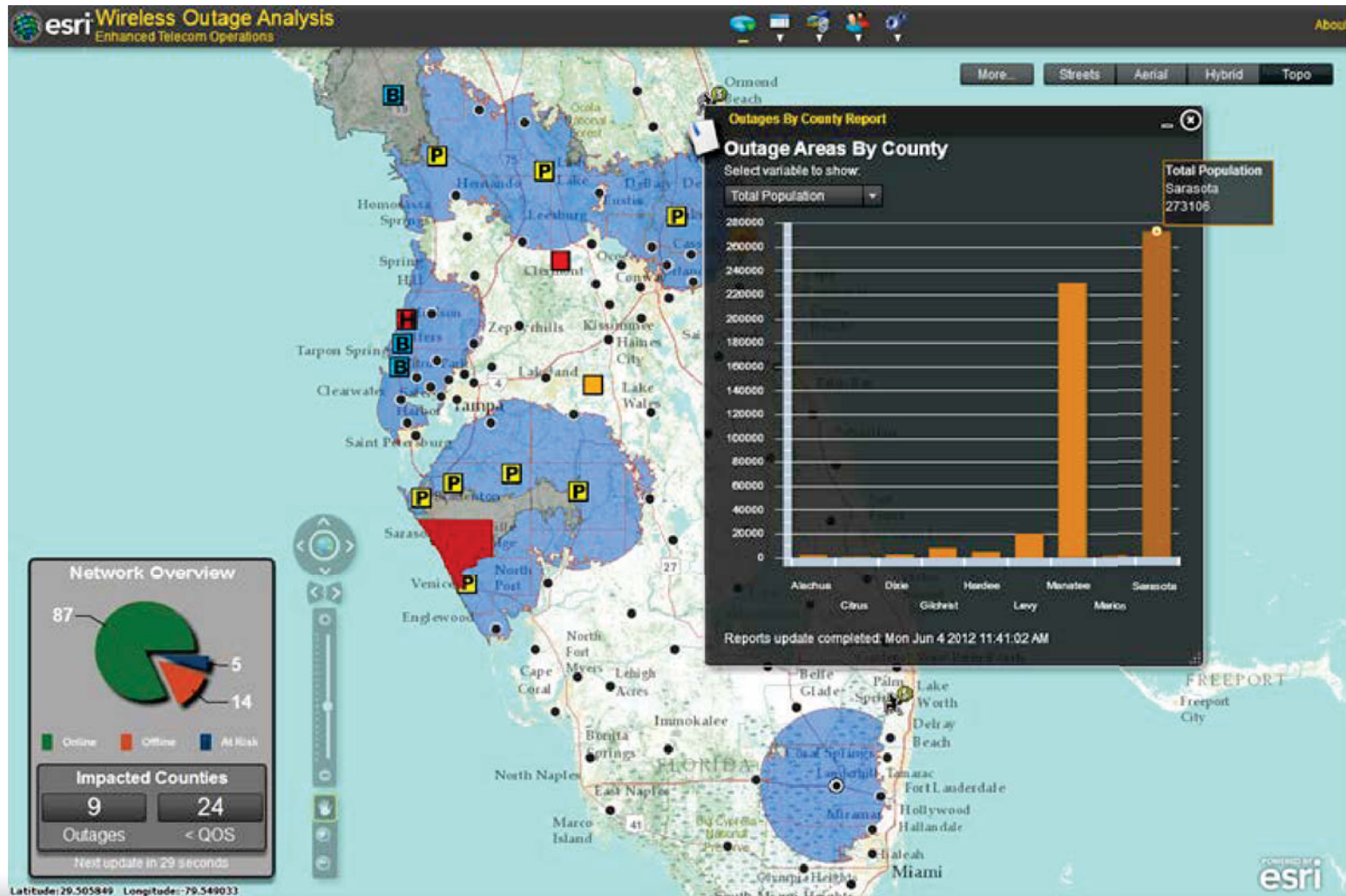
Real-time Data to Features

Using local feature services

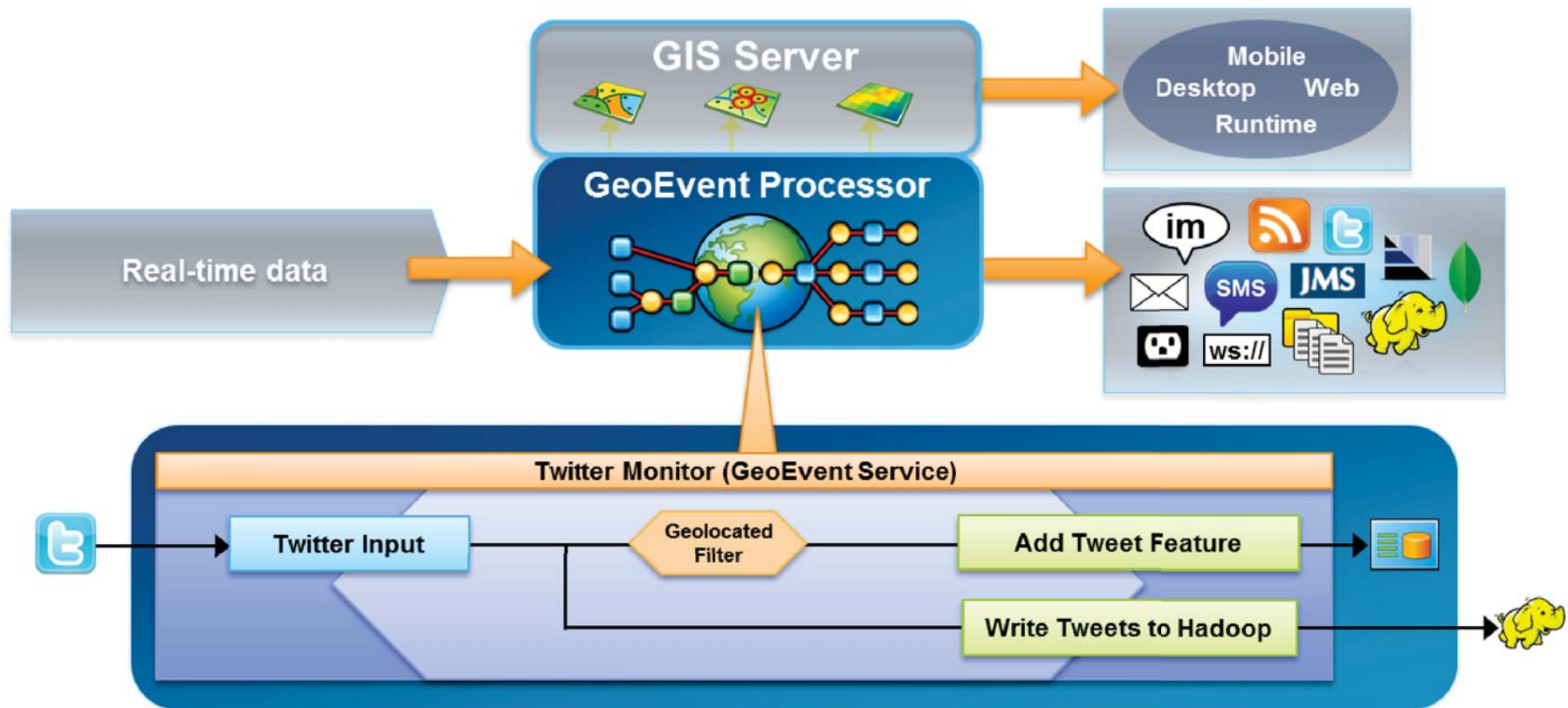


ArcGIS GeoEvent Processor - An Introduction

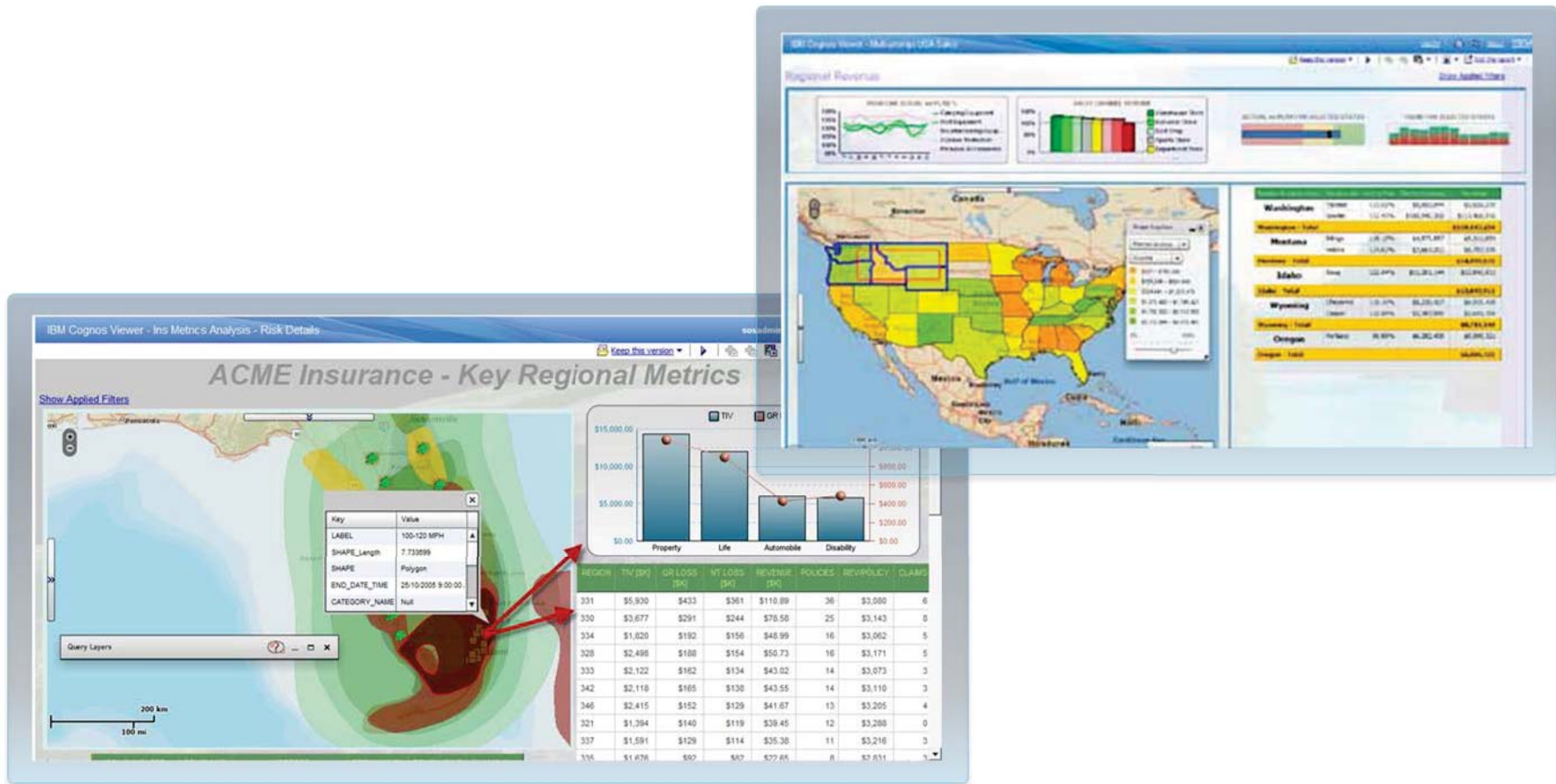
Spatial Dashboard



Processing and Analysis GeoEvent Services



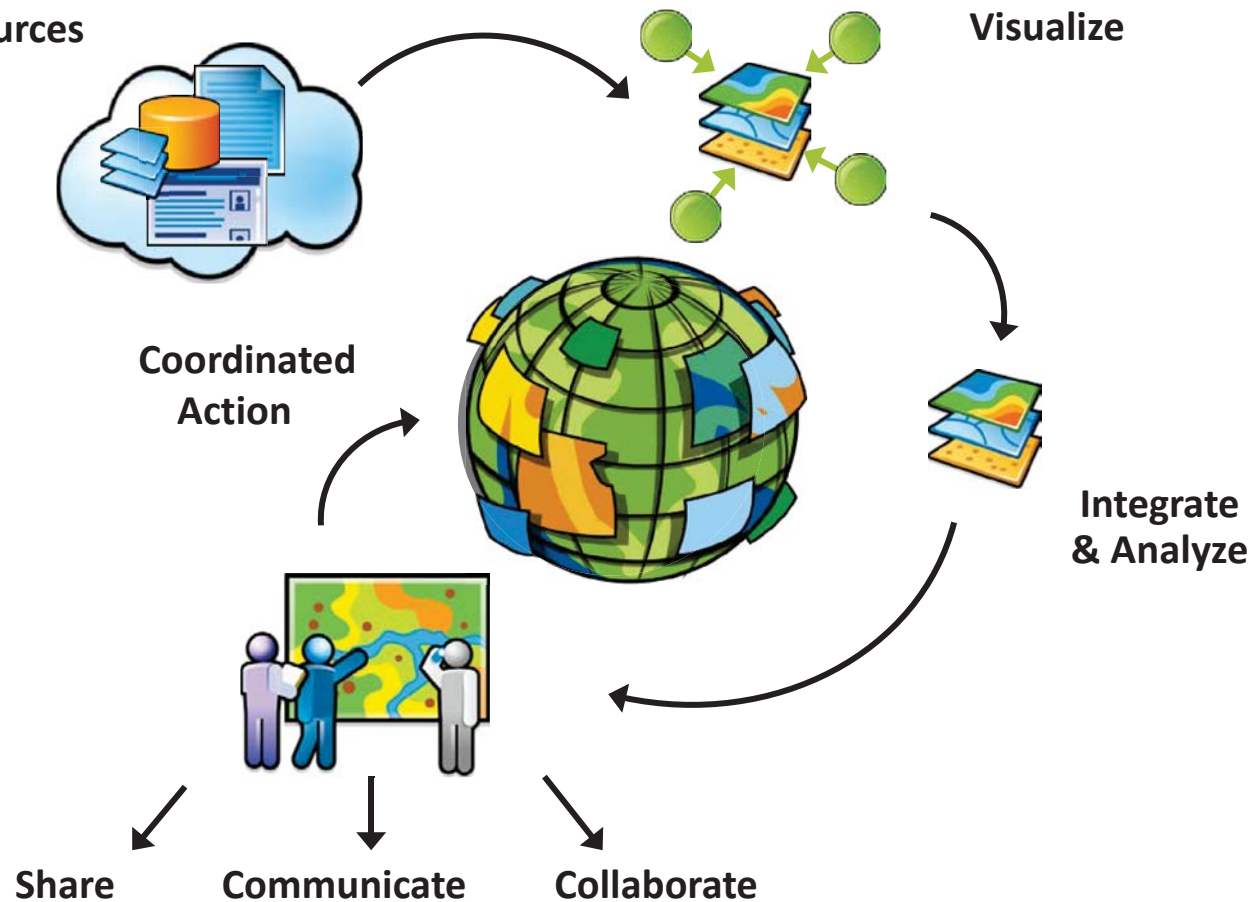
Integration with BI



Common Operating Platform

Transforming Data

Many Data Sources



 **CABLE-TEC**
EXPO'13
OCTOBER 21-24 / ATLANTA, GA

Randy Frantz

rfrantz@esri.com

909 793-2853x2958



Tweet about today's session on Twitter  [#scteExpo](https://twitter.com/scteExpo)

expo.scte.org