



Creating Infinite
Possibilities.

Voice Control of Set-Top Box for Customers with Non-Standard Speech

Adina Halter

Sr. Principal Software Architect

Comcast

adina_halter@cable.comcast.com



What is non-standard speech?

Photo by alexandre saraiva carniato:

<https://www.pexels.com/photo/grayscale-photography-of-man-sitting-on-wheelchair-3044623/>

“Switch the channel to HBO”

“It doesn’t understand me. I don’t know why.” (giggle)

“I have the capabilities of doing streaming if someone else is here pushing the buttons for me. But I can’t do it myself. And so, I never do it.”

“I used to use voice activation, but now it doesn’t understand me any longer. So, I’ve kinda’ lost the use of it.”

Independence

Fewer steps

Speedier navigation

**Less mental and
physical effort**

Being valued

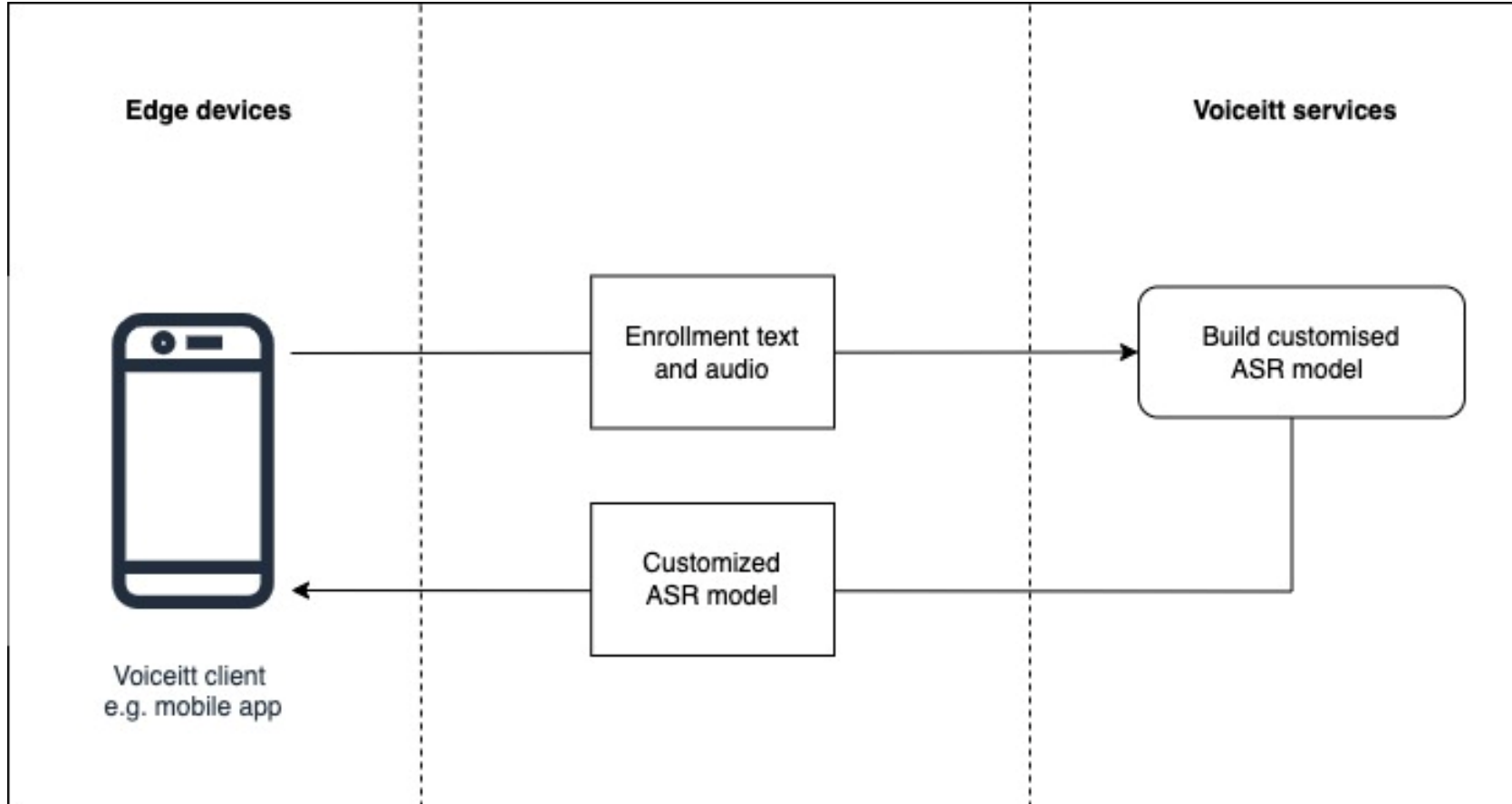


Creating Infinite Possibilities.

Our Solution

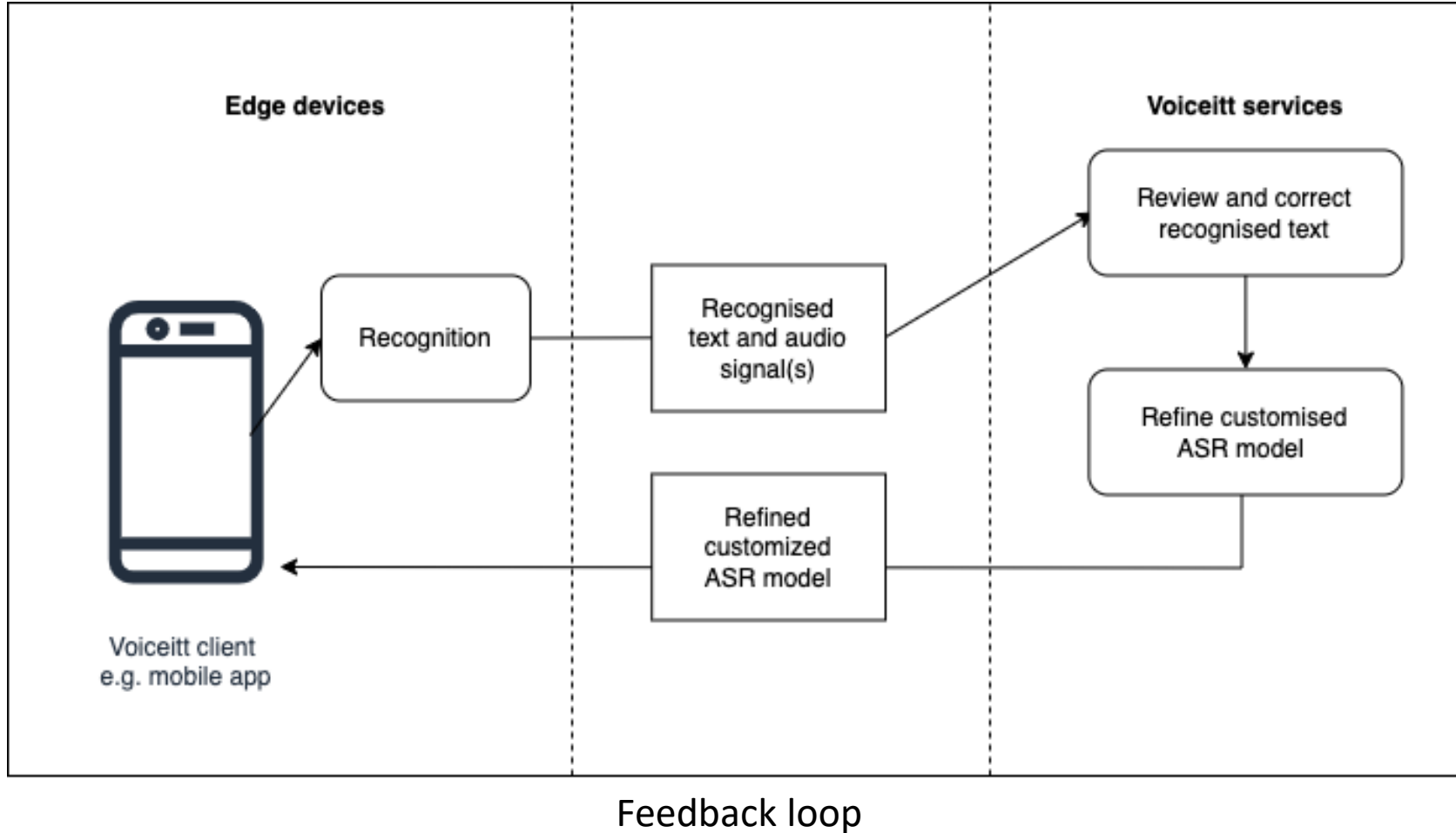
enable customers with speech disabilities to access and control their X1 set-top boxes (and the wider Xfinity home and entertainment platform) by voice.

Discreet ASR (Automatic Speech Recognition)

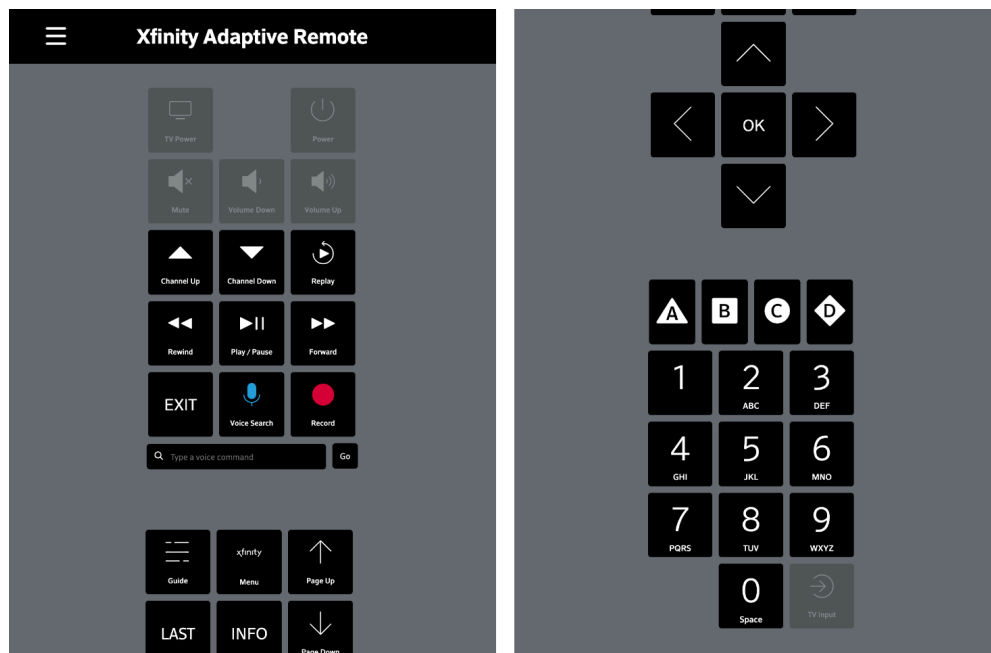


Customized model downloaded onto the edge device

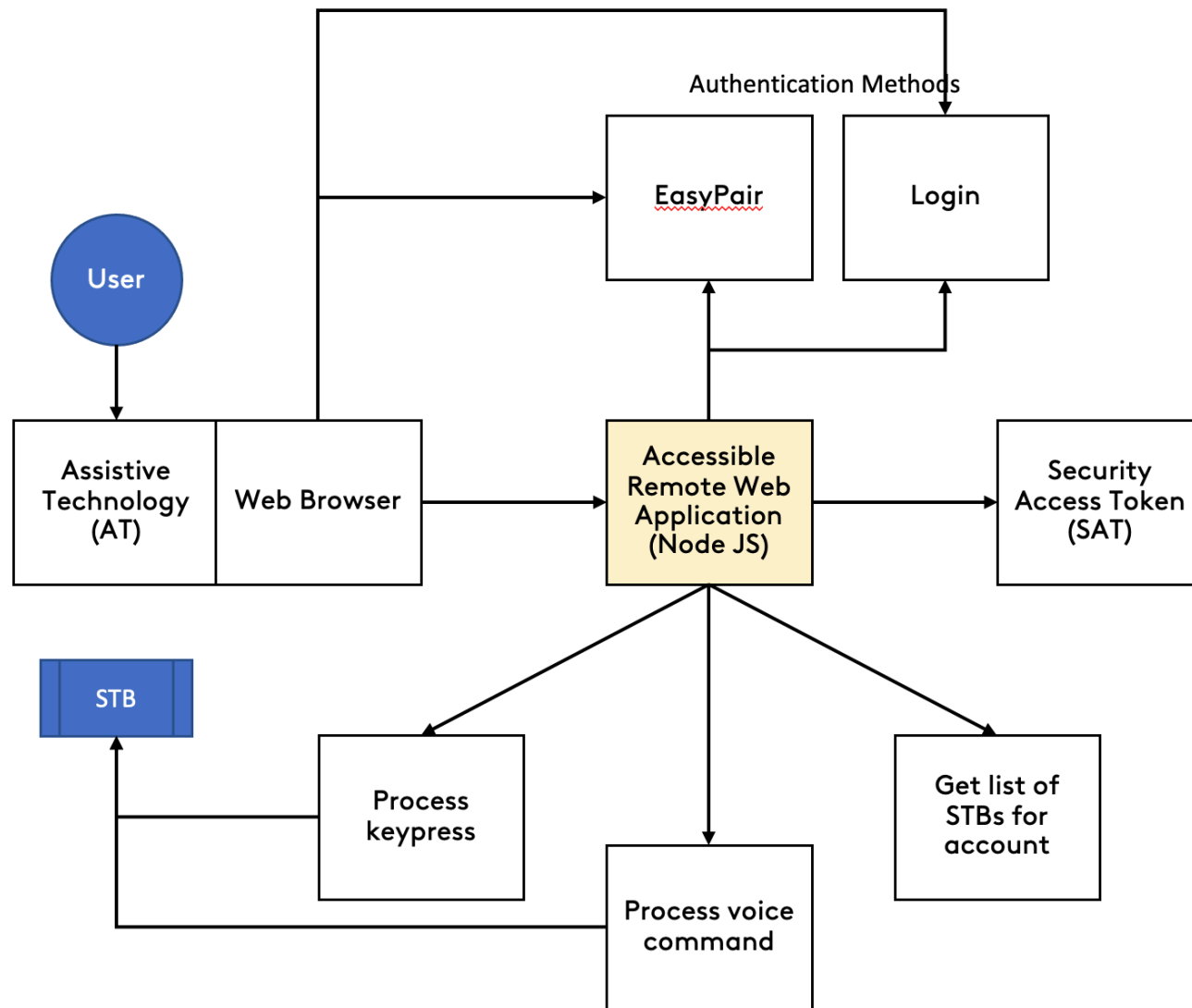
Continuous ASR



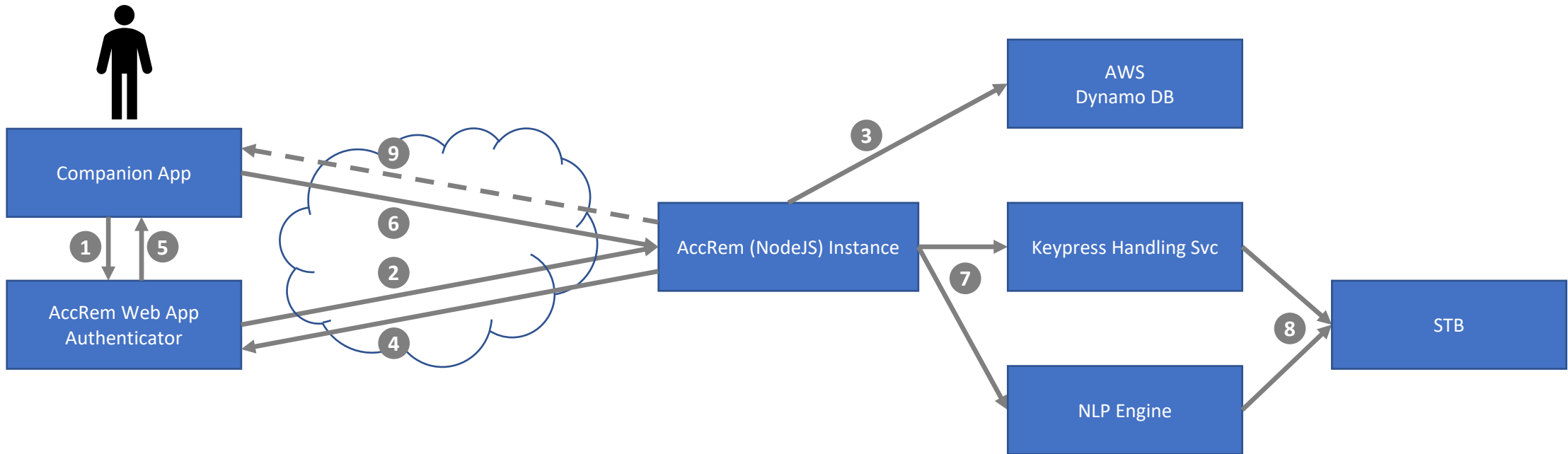
Adaptive Remote



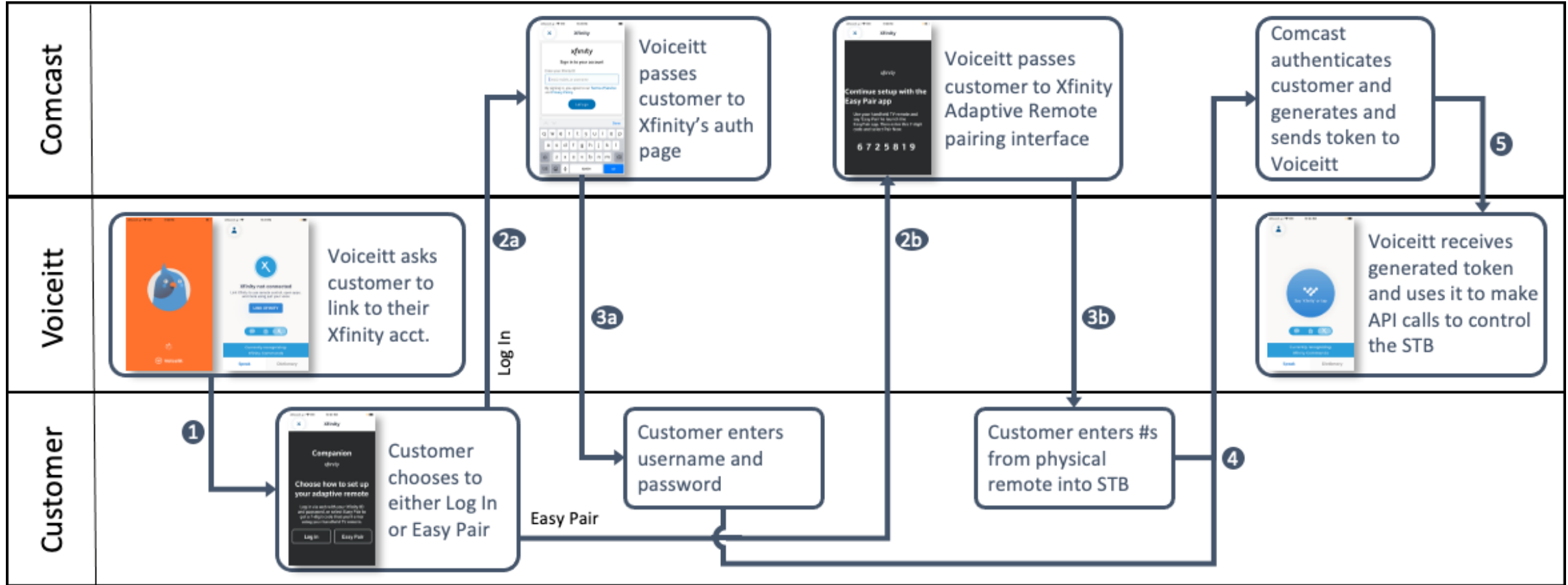
Adaptive Remote on iPad
(scrolled top and bottom)



Companion App

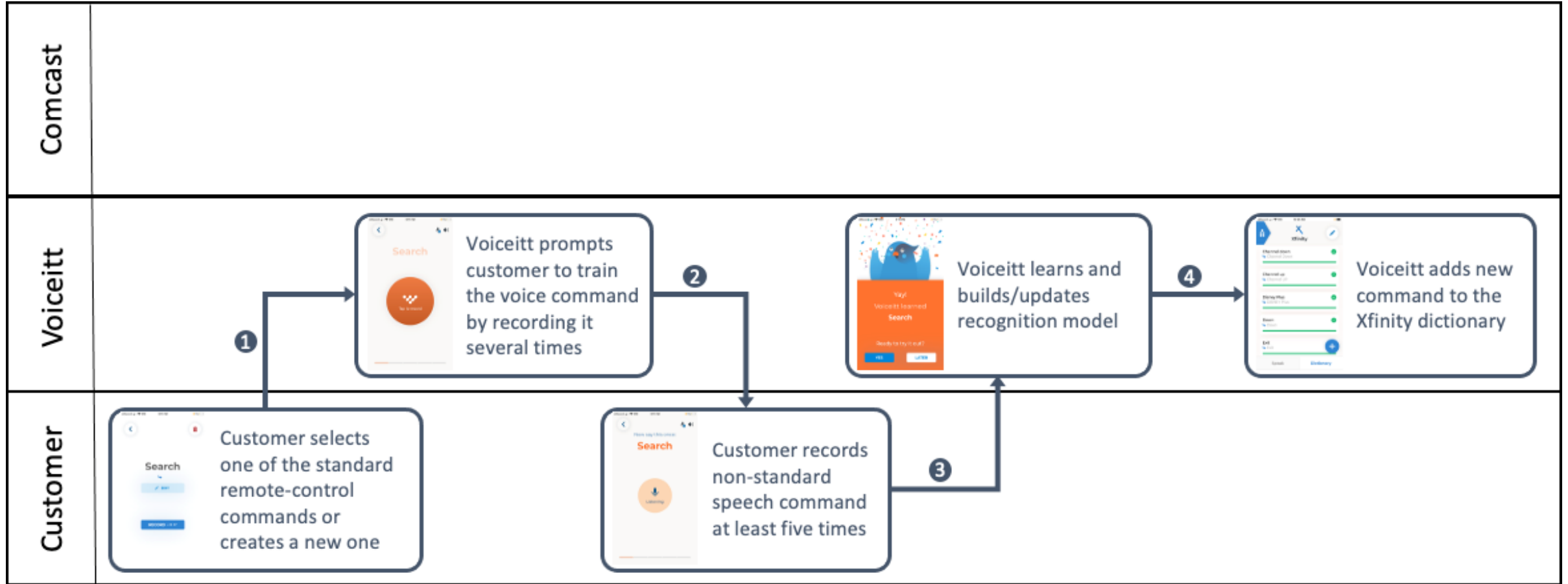


Customer Authentication



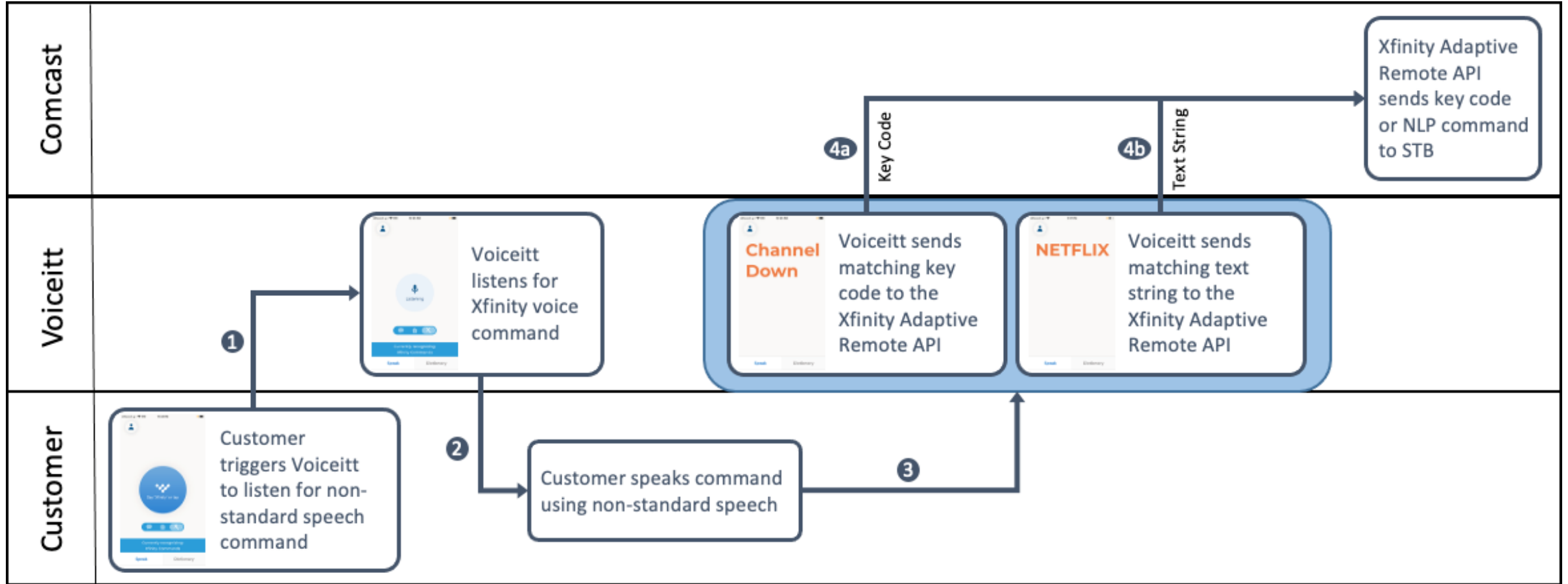
*We are using our company/product names here to illustrate how we integrated the different technologies while ensuring the privacy of each company's customers. Similar solutions can be developed by your organization's product team as well.

Voice Imprint



*We are using our company/product names here to illustrate how we integrated the different technologies while ensuring the privacy of each company's customers. Similar solutions can be developed by your organization's product team as well.

Set-top Box Control



*We are using our company/product names here to illustrate how we integrated the different technologies while ensuring the privacy of each company's customers. Similar solutions can be developed by your organization's product team as well.



Creating Infinite
Possibilities.

Thank You!

Adina Halter

Sr. Principal Software Architect
Comcast

adina_halter@cable.comcast.com