



**ATLANTA, GA**  
**OCTOBER 11-14**

**SCTE**  
a subsidiary of CableLabs®

# UNLEASH THE POWER OF LIMITLESS CONNECTIVITY



**2021 Fall  
Technical Forum**  
SCTE • NCTA • CABLELABS



SCTE  
a subsidiary of CableLabs®

## Operational Transformation

# Strategies for Continuous Deployment at Scale at the Network Edge: a.k.a. The Pursuit of the Zero-Downtime Headend

## Quincy Itheme

Manager, Software Development & Engineering  
Comcast

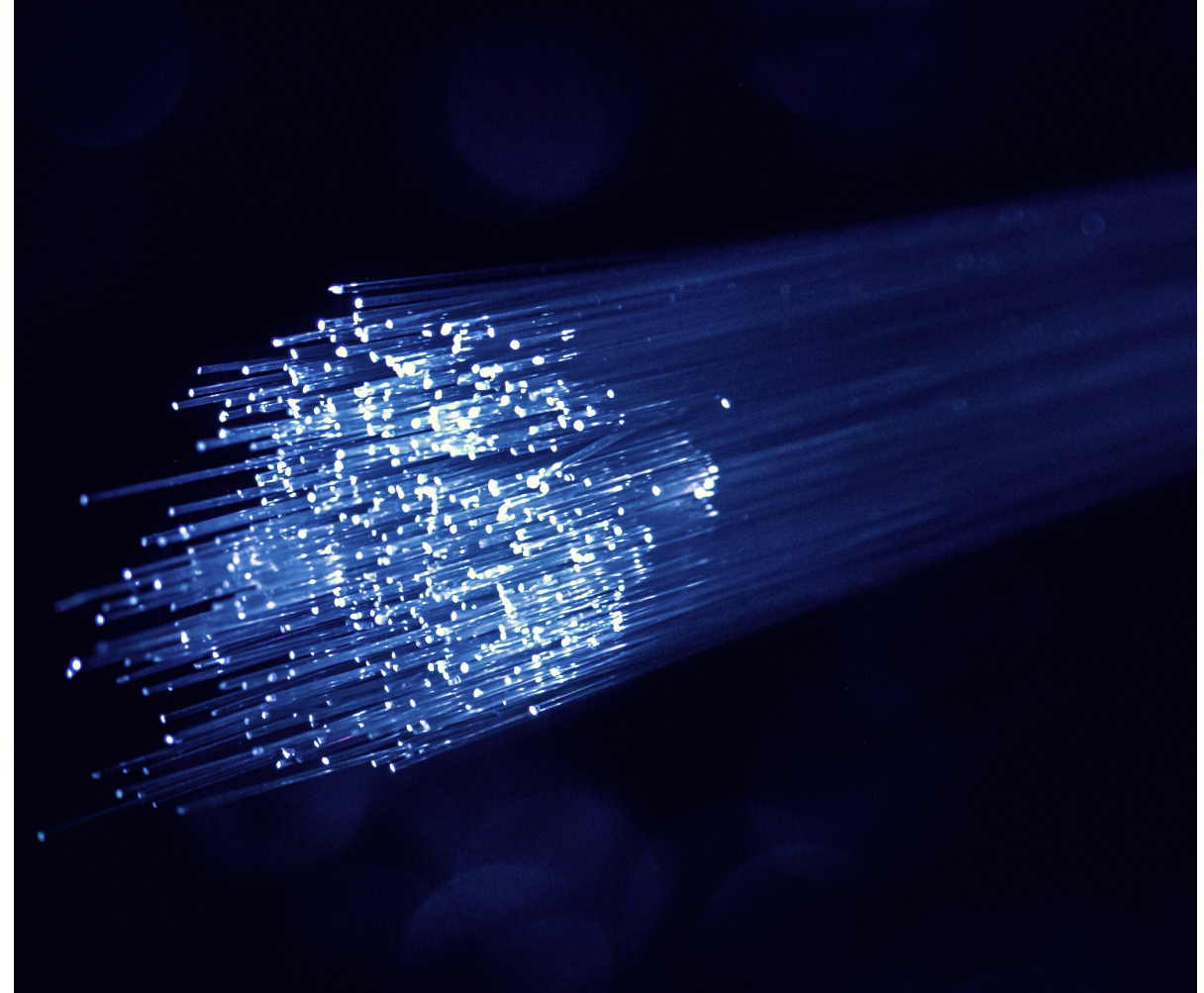


VIRTUAL EXPERIENCE  
OCTOBER 11-14



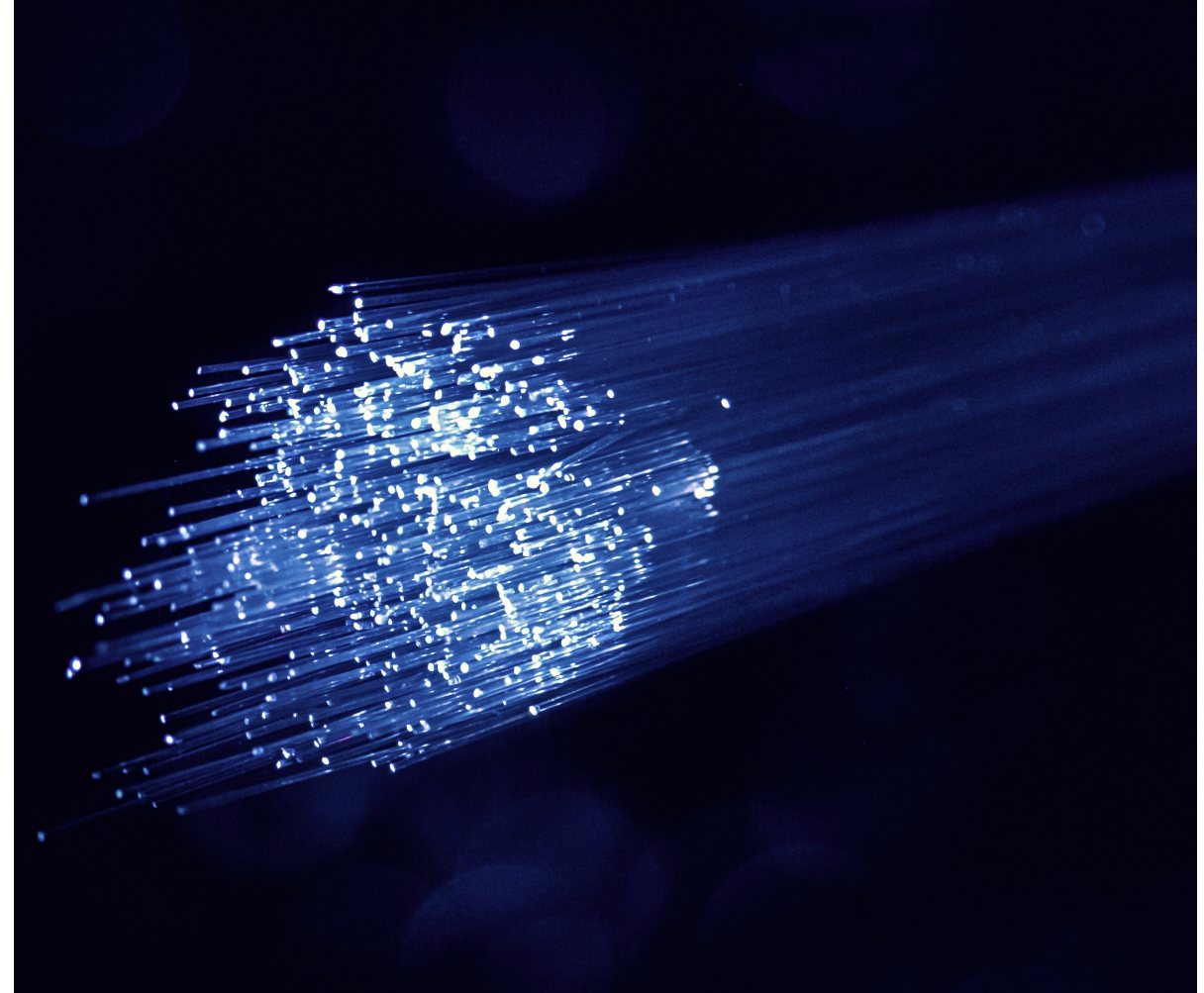
## What is it?

- "Edge of the network" constantly changing
- Microwave, Coaxial tree-and-branch, modern HFC
- Moving closer to consumers
- Where optical signals hand off to RF or the output of set-top box
- Depends who you ask!



## Our Focus

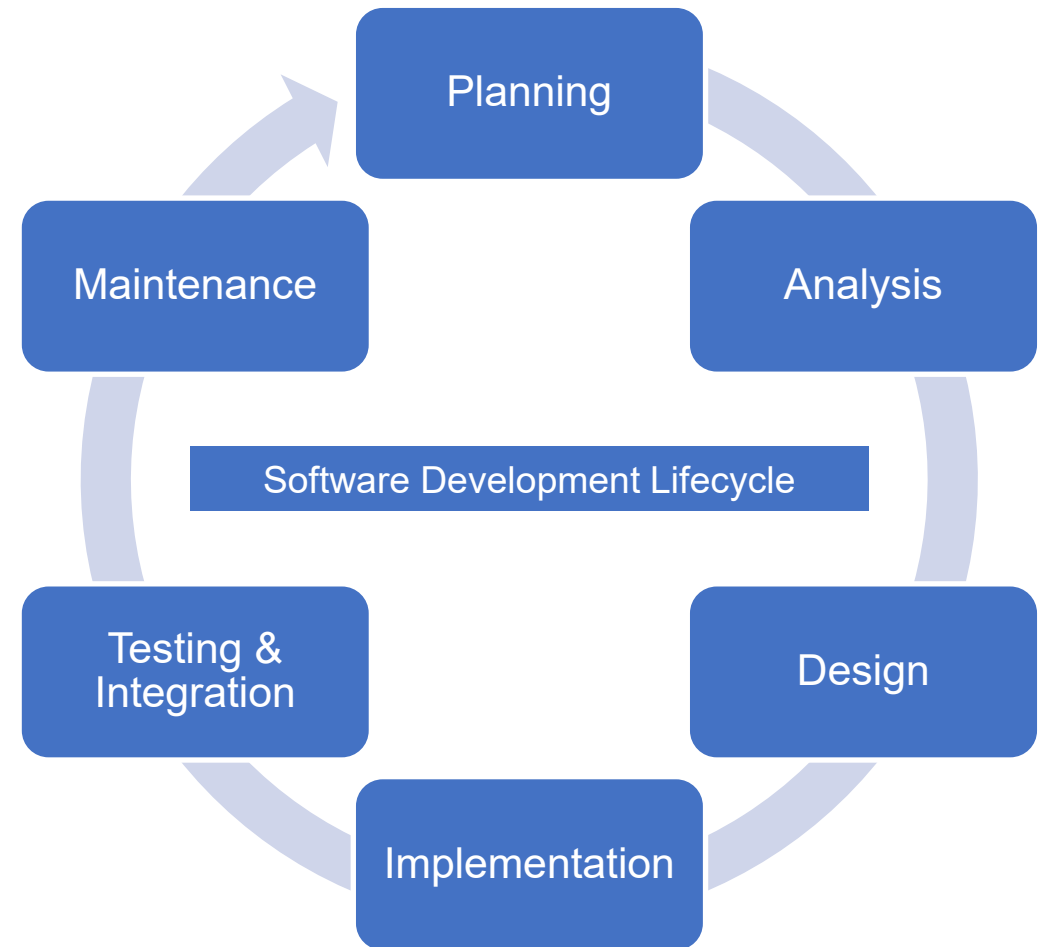
- Focus on the headend, CMTS
- CMTS devices transformed into vCMTSs
- Network edges must always be healthy and ready for anything
- Big focus on CI/CD





## Benefits of CI/CD

- Make changes quickly and safely
- Zero downtime
- Huge industry support around tooling, best practices
- Encouraged to “fail fast”
- Agile, Devops, SDLC





## The CI/CD Journey at Comcast

- Multiple teams already leveraging different platforms
- Unite internal community under one platform
- Architecture Guild and Architecture Design Record
- Ever evolving, community driven language of best practices



App Definition and Development

Database

Streaming & Messaging

Application Definition & Image Build

Continuous Integration & Delivery

Orchestration & Management

Scheduling & Orchestration

Coordination & Service Discovery

Remote Procedure Call

Service Proxy

API Gateway

Service Mesh

Runtime

Cloud-Native Storage

Container Runtime

Cloud-Native Network

Provisioning

Automation & Configuration

Container Registry

Security & Compliance

Key Management

Cloud

Public

[l.cncf.io](https://l.cncf.io)

This landscape is intended as a map through the previously uncharted terrain of cloud native technologies. There are many routes to deploying a cloud native application, with CNCF Projects representing a particularly well-traveled path

**CLOUD NATIVE COMPUTING FOUNDATION**

**CLOUD NATIVE Landscape**

Partners: Redpoint, Amplify

Special

Kubernetes Certified Service Provider

Platform

Certified Kubernetes - Distribution

Certified Kubernetes - Hosted

Certified Kubernetes - Installer

PaaS/Container Service

Observability and Analysis

Monitoring

Logging

Tracing

Chaos Engineering

Serverless

Kubernetes Training Partner

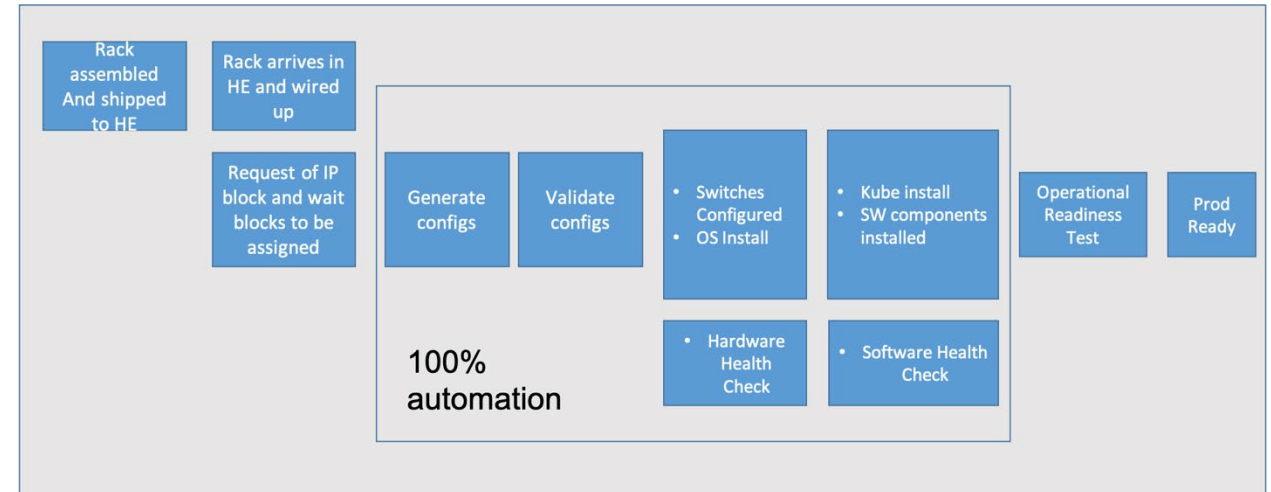


## Single Platform Focus

- Unified platform agreed upon
- Separate, individual team responsible for maintenance and upkeep
- Community assisted onboarding and troubleshooting

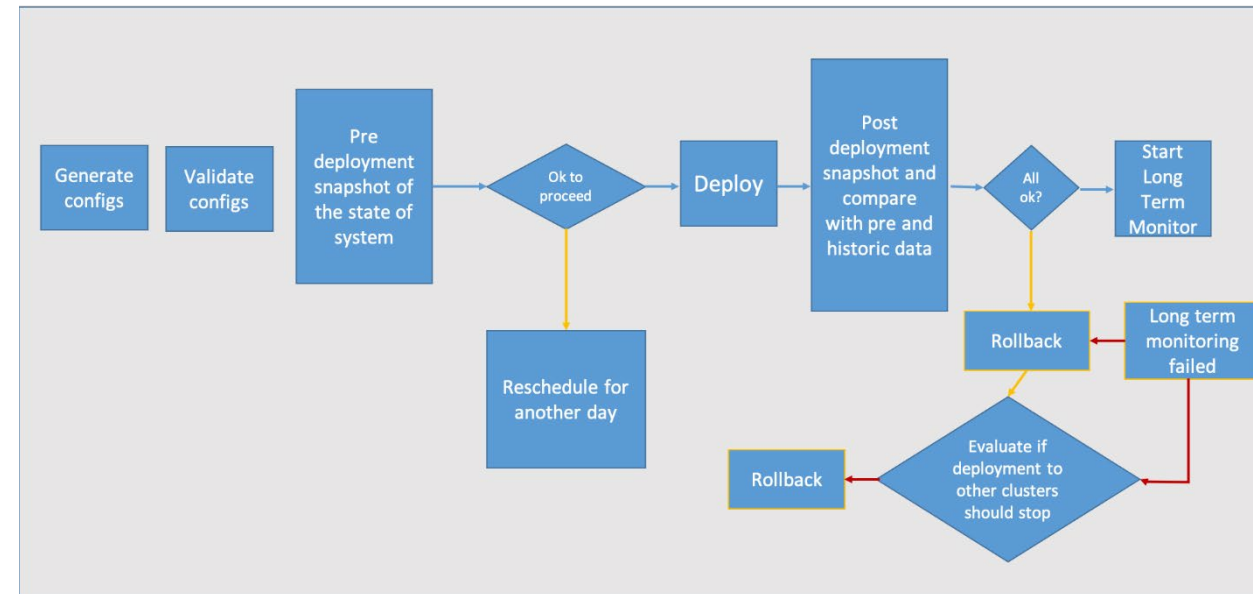
## CI/CD Driving Improvements

- vCMTS patches and updates handled via CI/CD
- Changes that previously required a technician in the field
- Changes pushed out to over 10K devices
- Push button deployment



## CI/CD Driving Improvements

- Prior mistakes to human error eliminated
- Changes that took days completed in a few hours
- Rolling back changes can be done in minutes in some scenarios
- In some cases, opt to rebuild software vs debug and fix





ATLANTA, GA  
OCTOBER 11-14

SCTE<sup>®</sup>  
a subsidiary of CableLabs<sup>®</sup>

# Thank You!

Quincy Itheme

Manager, Software Development & Engineering  
Comcast Cable  
[quincy\\_ltheme@cable.comcast.com](mailto:quincy_ltheme@cable.comcast.com)