




SCTE • ISBE

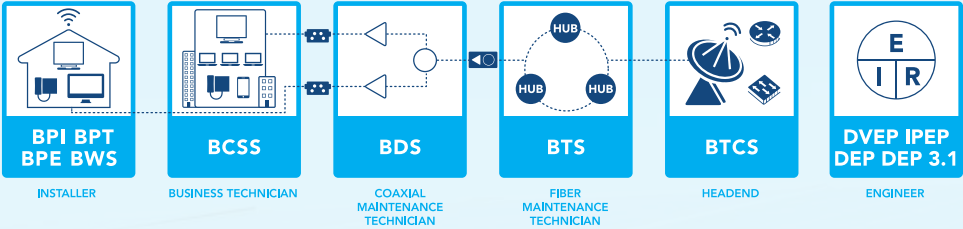
LEARN TO BE AN EXPERT  
FROM THE EXPERTS  
IN CABLE TECHNOLOGY.



EARN SCTE•ISBE CERTIFICATIONS TODAY!

- 
- :: Prove your **Cable Knowledge**
  - :: Gain Recognition for your **Skills**
  - :: Promote your **Expertise**
  - :: Advance your **Career**

# CERTIFICATIONS FOR ALL AREAS OF THE CABLE NETWORK



## SCTE•ISBE INSTALLER (SCTE•ISBE Broadband Premises Installer/BPI)

**SCTE • ISBE BPI CERTIFIED**

The SCTE•ISBE Broadband Premises Installer (BPI) Certification describes the knowledge of an entry-level individual who will install and troubleshoot telecommunications services (video, voice, and data) at the customer's premises. Successful candidates have the knowledge to carry out a basic triple-play installation but are not yet proficient.

Also available in Spanish: SCTE•ISBE Instalador de Banda Ancha a Domicilio

## SCTE•ISBE TECHNICIAN (SCTE•ISBE Broadband Premises Technician/BPT)

**SCTE • ISBE BPT CERTIFIED**

The SCTE•ISBE Broadband Premises Technician Certification describes the knowledge of an experienced field technician who will install and troubleshoot more complex telecommunications services (video, voice, and data) at the customer's premises. Successful candidates have the knowledge to install and service most triple-play installations.

## SCTE•ISBE INSTALLER WIRELESS (SCTE•ISBE Broadband Wireless Specialist/BWS)

**SCTE • ISBE BWS CERTIFIED**

The SCTE•ISBE Broadband Wireless Specialist (BWS) Certification describes the knowledge of an entry-level individual who will plan, install and troubleshoot wireless services at the customer's premises. Successful candidates have the knowledge to carry out basic wireless installations and troubleshoot these wireless networks in an efficient manner.

## SCTE•ISBE EXPERT TECHNICIAN (SCTE•ISBE Broadband Premises Expert/BPE)

**SCTE • ISBE BPE CERTIFIED**

The SCTE•ISBE Expert Technician Certification describes the knowledge of an experienced field technician who will install and troubleshoot telecommunications services (video, voice, and data) at the customer's premises. Successful candidates demonstrate that they have the knowledge to install and troubleshoot a variety of triple-play installations, from easy to complex, as well as the knowledge to mentor and coach junior employees.

## **SCTE•ISBE BUSINESS TECHNICIAN**

(SCTE•ISBE Business Class Services Specialist/BCSS)



The SCTE•ISBE Business Class Services Specialist Certification describes the knowledge of an experienced technician who will perform business level installations for small to medium business class customers. Successful candidates have the knowledge to install and troubleshoot as required to repair or restore the customer's business service.

## **SCTE•ISBE COAX MAINTENANCE TECHNICIAN**

(SCTE•ISBE Broadband Distribution Specialist/BDS)



The SCTE•ISBE Broadband Distribution Specialist Certification describes the knowledge in the RF distribution of signals over the access network, including all aspects of the access network or outside plant from the node, amplifier and out to the distribution tap.

Also available in Spanish: SCTE•ISBE Especialista en Distribución de Banda Ancha

## **SCTE•ISBE FIBER MAINTENANCE TECHNICIAN**

(SCTE•ISBE Broadband Transport Specialist/BTS)



The SCTE•ISBE Broadband Transport Specialist Certification describes the knowledge in the transport of optical signals, including aspects of the cable fiber network from the headend to the hub and from the hub to the node.

## **SCTE•ISBE HEADEND TECHNICIAN**

(SCTE•ISBE Broadband TelecomCenter Specialist / BTCS)



The SCTE•ISBE Broadband TelecomCenter Specialist Certification describes the knowledge in maintenance and troubleshooting of inside plant facilities to ensure minimal system outages, maximum reliability, and standards compliance for optimal operations. This certification includes knowledge of advanced entertainment, data, and voice networks within the headend.

## **SCTE•ISBE DOCSIS® ENGINEER**

(SCTE•ISBE DOCSIS® Engineering Professional/DEP)



The SCTE•ISBE DOCSIS® Engineering Professional Certification is offered in partnership with CableLabs® and certifies the knowledge of the interface requirements and operation for the deployment of DOCSIS devices over cable networks.

## **SCTE•ISBE VIDEO ENGINEER**

(SCTE•ISBE Digital Video Engineering Professional/DVEP)



The SCTE•ISBE Digital Video Engineering Professional Certification describes the knowledge in the engineering aspects of digital media (which includes video, audio, interactive services, and associated data) systems as deployed in the cable telecommunications industry. The scope of this certification includes the design, analysis, testing, integration, deployment considerations and troubleshooting of a variety of digital media systems from headend to customer premises.

## **SCTE•ISBE IP ENGINEER**

(SCTE•ISBE Internet Protocol Engineering Professional/IPEP)



The SCTE•ISBE Internet Protocol Engineering Professional Certification describes the knowledge in the engineering aspects of Internet Protocol systems as deployed in the cable telecommunications industry. The scope of this certification includes the design, analysis, testing, integration, deployment considerations, and troubleshooting of a variety of IP systems.

# WHY BECOME SCTE•ISBE CERTIFIED?

## SCTE•ISBE CERTIFICATION IS:

- :: The cable industry's premier endorsement for professionals
- :: The only global certification available within our industry
- :: Formed from a proven foundation of knowledge—MSO experts and patent holders
- :: Based on in-depth testing and ongoing professional development maintenance through continuing technical education requirements
- :: Continually updated based on new standards and technologies

SCTE•ISBE certifies cable telecommunication professionals in various levels of expertise and across all levels of the cable network. As a non-profit, SCTE•ISBE is invested in the ongoing development of its members and constantly looking at providing the most current and relevant training to enable the success of its members.

## STAND OUT FROM THE CROWD

- :: **Prove Your Cable Expertise**  
The SCTE•ISBE Certification Program enables individuals to demonstrate proficiency of relevant, career-enhancing technical knowledge.
- :: **Gain Recognition For Your Skills**  
SCTE•ISBE Certification provides employers with an industry-recognized benchmark for technical expertise that may be incorporated into the hiring, promotion and other human resource management processes.
- :: **Promote Your Expertise**  
Identify yourself as a leader in your field. By maintaining and promoting your SCTE•ISBE Certification, your skills will stay fresh on the latest technologies and you will stand out to current and prospective employers.
- :: **Advance Your Career**  
Professional Certifications are a great way to demonstrate that you possess a solid knowledge of cable telecommunications technologies. Choosing to pursue SCTE•ISBE Certifications also says a lot about your drive, self-discipline and overall professionalism. That has the potential to lead to higher pay, promotions, and new job opportunities.

DISTINGUISH  
YOURSELF FROM  
YOUR PEERS.  
GET SCTE•ISBE  
CERTIFIED TODAY.





# HOW TO BECOME SCTE•ISBE CERTIFIED

## PREPARE FOR CERTIFICATION

Gain the knowledge you need to earn certification through SCTE•ISBE training.

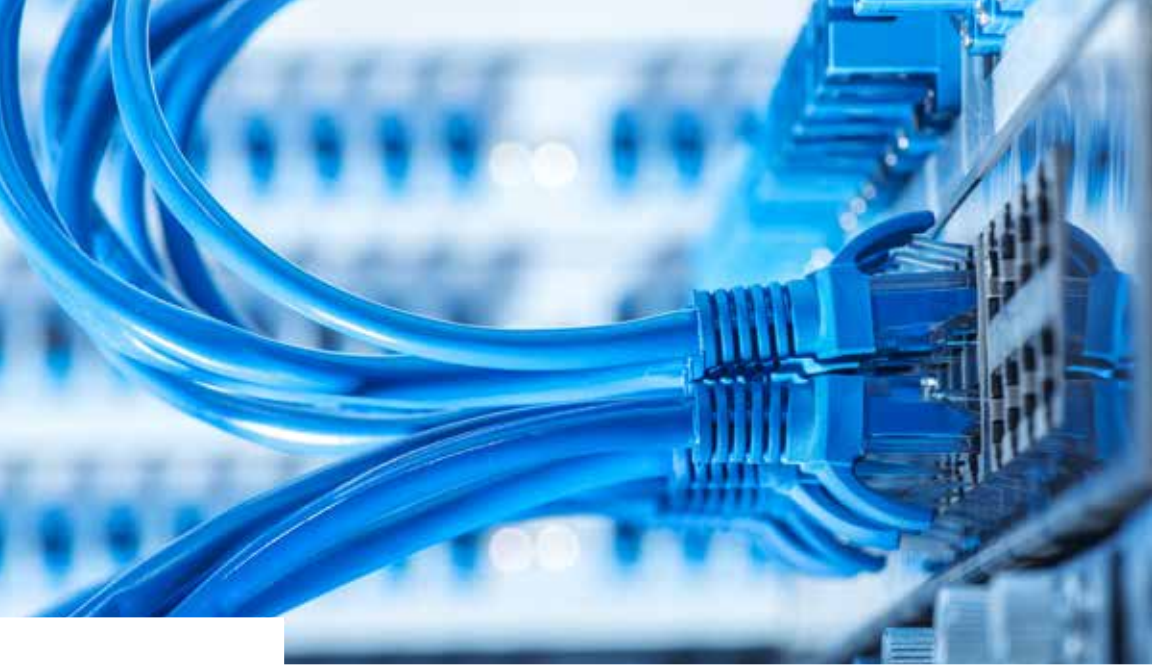
In addition to on-the-job experience you gain everyday, you can rely upon SCTE•ISBE to provide opportunities for building your cable knowledge through SCTE•ISBE Certification Prep Courses, technology training courses, educational webinars and national events, plus local chapter technical sessions and study groups all support successful achievement of certification.

SCTE•ISBE also provides a variety of self-study technical resources, including a detailed outline of the exam topics, pocket guides, job aids, mobile apps, technical white papers, and more. In addition, we offer more than 700 modules of training content with more than 300 interactive eLearning modules in our new course learning experience called VirtuLearn™. A VirtuLearn course consists of NetworkSim™ 3D simulations, LightningMod™ microlearning modules, interactive eBooks and a VirtuGame™.

*"We at Altice Technical Services promote continuous learning as we recognize the impact that skilled, well-prepared employees have on our mission to build a culture of excellence. SCTE•ISBE certifications are the keystone of knowledge validation and employee engagement that supports our competitive industry advantage. Uniting SCTE•ISBE into our career advancement programs produce clear career directions that empowers our team take control of their future while our customers receive an outstanding customer experience from any interaction from our SCTE•ISBE certified technicians."*

**Jonathan McClanahan**

Head of Training, Altice Technical Services



### TAKE AND PASS THE EXAM.

SCTE•ISBE offers an affordable and user-friendly experience with an easy process for becoming industry certified:

- :: Purchase the exam online
- :: Complete a 50-question examination
- :: Immediate access to the results—no waiting around for essay questions to be graded!
- :: Straightforward grading
- :: All exams are graded pass or fail
- :: To pass, you must achieve a minimum score of 76 percent correct
- :: Exam results will be released only to you (unless you request otherwise in writing)

### EXAMS ARE AVAILABLE IN TWO WAYS:

- :: Online in the presence of an approved SCTE•ISBE proctor.  
For approved SCTE•ISBE proctors use the “Find a Proctor” link to locate a proctor in your area ([scte.org/proctor](https://scte.org/proctor)).
- :: Remote Proctoring over the Internet using SCTE•ISBE’s online remote proctoring system.  
For online Remote Proctoring, purchase both your certification exam and the online Remote Proctoring product from SCTE•ISBE. You will be provided instructions on how to schedule and access online Remote Proctoring.

**Learn more about these resources**  
[scte.org/certification](https://scte.org/certification)

**Purchase certification exams**  
[scte.org/exams](https://scte.org/exams)

# CONTRACTOR CERTIFICATION PROGRAM

Formed on a proven foundation of cable installation and service knowledge, the SCTE•ISBE Contractor Certification program is based on in-depth testing and professional development through technical education. It provides powerful benefits to cable system operators, contracting agencies and their employees.

## OVERALL BENEFITS INCLUDE:

- ∴ Increased revenues through improved installation and deployment efficiencies and decreased service calls
- ∴ Confidence and service reputation, and reduce technical training and assessment costs
- ∴ Enhanced customer satisfaction
- ∴ SCTE•ISBE's chapter network to improve professional connection to the industry

Ensure you're hiring and retaining the best installers and technicians. For more information, please contact SCTE•ISBE.

## SCTE•ISBE CERTIFICATION FACT

**11,000\***

ACTIVE SCTE•ISBE CERTIFICATIONS  
EARNED BY INDUSTRY PROFESSIONALS

\*Number of members certified as of 8/2017

# MAINTAIN YOUR SCTE•ISBE CERTIFICATION

## EARN RECERTIFICATION UNITS OR RETAKE THE EXAM.

All SCTE•ISBE certification credentials are valid for three years. Because technology changes so rapidly, it's important for you to continually update your knowledge. You can maintain your certification status by retaking a new exam or by earning SCTE•ISBE Recertification Units (RUs) before your certification expires. RUs may be accrued through SCTE•ISBE membership, attending SCTE•ISBE chapter meetings, company-sponsored training, courses, speaking or presenting, and other activities that help you stay on top of technology.

Learn more about how to  
maintain your certification  
[scte.org/certification](https://scte.org/certification)

Learn more about RUs  
[scte.org/ru](https://scte.org/ru)





# PROMOTE YOUR SCTE•ISBE CERTIFICATION

## MARKET YOUR EXPERTISE AND ADVANCE YOUR CAREER.

The industry recognizes SCTE•ISBE and its career path certifications as the industry's premier benchmark for proving telecommunication knowledge. Once you are certified, SCTE•ISBE will recognize your certification achievements and help you stand out. SCTE•ISBE will mail your certification and a certification patch to display your designation as well as add your name to the searchable certification professional database at [scte.org/findapro](http://scte.org/findapro). If you're an SCTE•ISBE member, you also will be recognized for your achievement in SCTE•ISBE's member newsletter, SCTE•ISBE Interval, and the SCTE•ISBE Member Directory.

*"The value I received while earning all of my SCTE•ISBE certifications is the wealth of knowledge gained during the pursuit. I apply it daily to technical challenges and it has helped me to reach new levels in our industry."*

**Randy Dart**

DVEP-E, DEP-E, BCE-E, BTCS-E,  
BTS-E, BDS-E, BCSS-E, BCT-E,  
BPE-E, BPT-E, BPI-E Sr. Manager,  
Engineering, Charter

## PROMOTE YOUR SCTE•ISBE CERTIFICATION USING THE FOLLOWING METHODS:

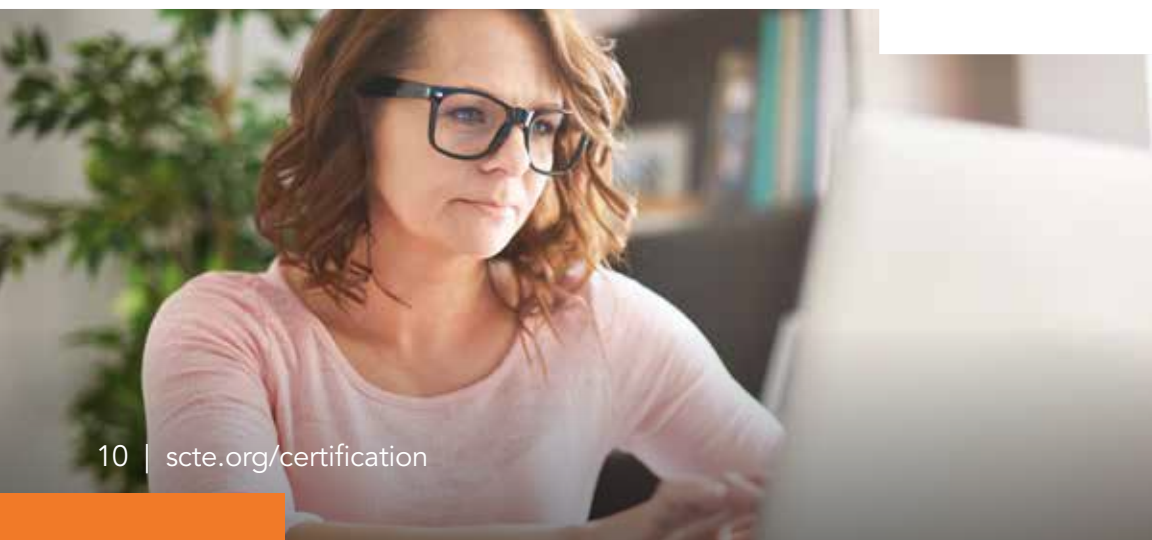
- 1. Personal Identification:**  
Display your credential initials following your name and when writing your signature (e.g., John Doe, SCTE•ISBE Installer).
- 2. Personal Communications:**  
Add SCTE•ISBE certification logos to your e-mail signature, business cards, ID badge and personal letterhead or website.
- 3. Your Company:**  
Post or publish your accomplishment via your company. You may be honored with recognition and/or advancement opportunities within your company or organization. If they don't already have a program in place, inform your employer of the benefits of SCTE•ISBE certifications.
- 4. Your SCTE•ISBE Chapter:**  
Local SCTE•ISBE Chapters may recognize newly certified individuals on their website or publish them in member communications.
- 5. Local Media Exposure:**  
Contact your local newspaper or other news source.

# 2018 RATES

Exam	Member	Non-Member
BPI	\$75	\$100
Instalador de Banda Ancha a Domicilio	\$75	\$100
BPT	\$75	\$100
BWS	\$75	\$100
BPE	\$95	\$125
BCSS	\$110	\$150
BDS	\$95	\$125
Especialista en Distribución de Banda Ancha	\$95	\$125
BTS	\$110	\$150
BTCS	\$110	\$150
DEP	\$150	\$200
DVEP	\$150	\$200
IPEP	\$150	\$200
Recertification (by RU application)	\$30	\$55
Remote Proctor	\$45	\$60

Each exam requires a testing fee. The tiered pricing structure emphasizes the added value of SCTE•ISBE's more advanced certifications. Payment can be made with credit card or through an SCTE•ISBE-approved Purchase Order.

Equal opportunity will be provided to all certification candidates regardless of race, religion, sex, national origin, age, color, ancestry, mental or physical disability or handicap, veteran's status or any other classification protected by applicable law.



## Take Learning to a Higher Level With the SCTE•ISBE CORTEX Expert Development System.

CORTEX is an essential professional development tool designed to foster your career advancement.

The CORTEX Mobile App is a resource that can extend learning and knowledge recall through interaction on the job site, where learning and performance matter most. Engineering and operations professionals can access SCTE•ISBE's vast library of technical resources and educational content created by SCTE•ISBE technology partners across the industry.

**The CORTEX Mobile App is available now to SCTE•ISBE members for download on both iOS and Android devices.**

**To learn more go to [scte.org/cortex](http://scte.org/cortex).**



# HOW DO YOU TURN YOURSELF INTO A CABLE TECHNOLOGY EXPERT? TURN TO THE EXPERTS.

SCTE•ISBE is the industry leader in developing certified experts. And you can be next. Learn core network technologies by taking courses on topics such as Ethernet, Internet Protocol, fiber optics, DOCSIS, home networking, wireless, video and more. **Expand your knowledge. Get certified. And advance your career.**

## CONTACT US TODAY!

Online: [scte.org/certification](https://www.scte.org/certification)

Email: [certification@scte.org](mailto:certification@scte.org)

Call: 1-800-542-5040

Essential Knowledge for Cable Professionals™

## SCTE • ISBE

Society of Cable Telecommunications Engineers  
International Society of Broadband Experts

[scte.org](https://www.scte.org) • [isbe.org](https://www.isbe.org)

